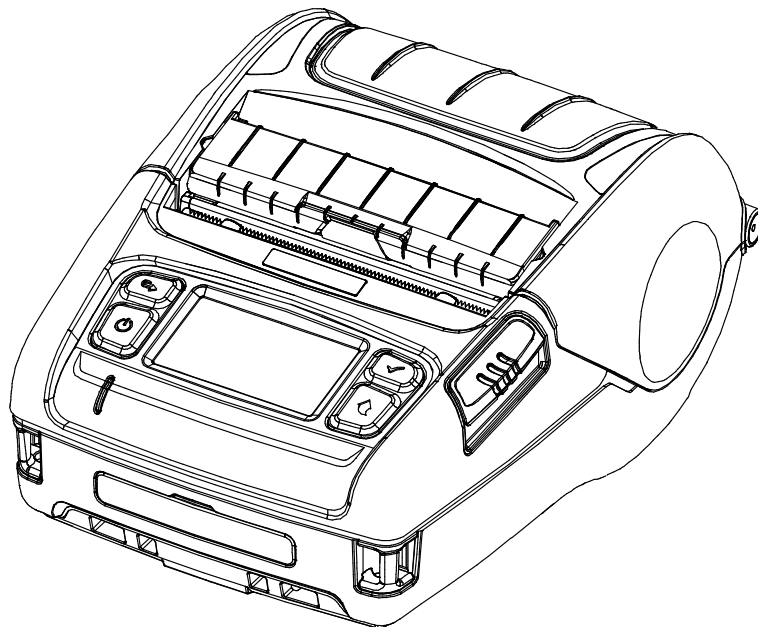




Printer Driver Manual

Label Printer

Ver. 1.00



Introduction

This printer driver Manual provides information on installation, uninstallation, detailed specifications, and usage of the printer's Windows Driver according to PC operating system (OS).

It is advisable to read the contents of this manual carefully before using the customer display for the first time.

Table of Contents


1. Supported Operating System (OS)	4
2. Supported Printers	4
3. Printer Driver Preparation	4
4. Printer Driver Installation	4
4-1 Printer Driver Installation	4
4-1-1 Introductory Steps	5
4-1-2 Local Port.....	5
4-1-3 Network Port	7
4-1-4 USB Port	8
4-1-5 Other Port	9
4-1-6 Printer Options	10
4-1-7 Font Downloader Installation.....	12
4-2 Printer Driver Uninstallation.....	13
4-2-1 Printer Driver Uninstallation	14
4-2-2 Printer Driver Package Uninstallation.....	16
4-3 Printer Driver Update	18
4-4 Steps for downloading fonts	20
5. Printer Driver Settings	26
5-1 Printing Preferences.....	26
5-2 Adding new paper size	27
6. Specifications	28
6-1 Specifications	28
6-2 Paper Size.....	29
6-3 Barcode Fonts.....	29

1. Supported Operating System (OS)

The following operating systems are supported for usage.

Microsoft Windows XP SP3 (32bit, 64bit)
Microsoft Windows Server 2003 SP1 (32bit)
Microsoft Windows Server 2003 (64bit)
Microsoft Windows VISTA (32bit, 64bit)
Microsoft Windows Server 2008 (32bit, 64bit)
Microsoft Windows Server 2008 R2 (64bit)
Microsoft Windows 7 (32bit, 64bit)
Microsoft Windows 8 (32bit, 64bit)
Microsoft Windows Server 2012 (64bit)
Microsoft Windows 10 (32bit, 64bit)

Caution

- Serial and Parallel printer port do not work on Windows 10 version 1511 (OS Build 105860.104) specific. We recommend you to install the latest Windows 10 update through Windows Update before installing Windows Driver.
- You can download and install the Windows Update in the Update & security tab of the Settings menu.
( > Settings > Update & security > Windows Update).

2. Supported Printers

The Windows driver is available for the following SATO printers.

SATO PV3
SATO PV4

3. Printer Driver Preparation

The Windows Driver is included in the enclosed CD, and the latest file version can be downloaded from SATO website. (www.satoworldwide.com)

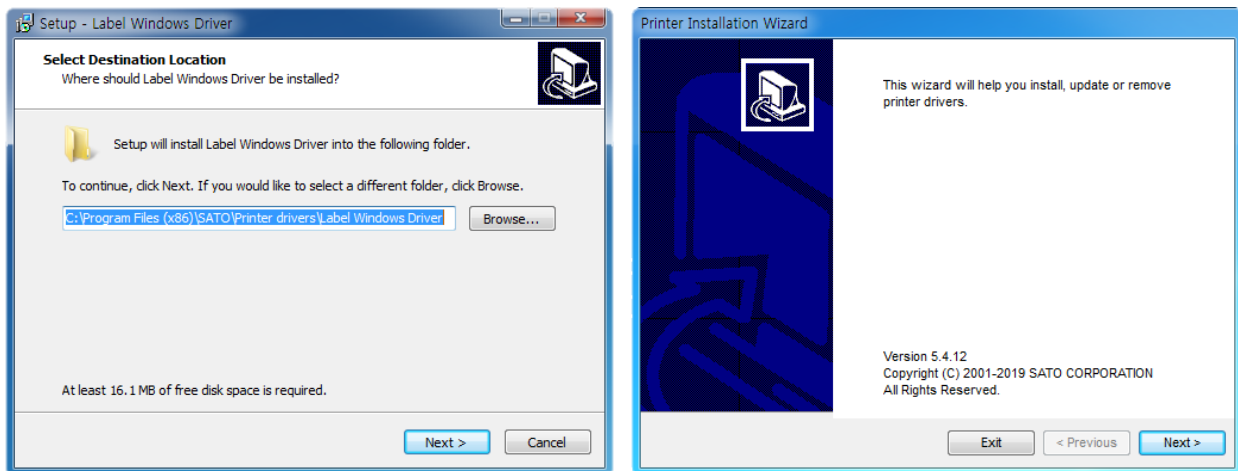
4. Printer Driver Installation

4-1 Printer Driver Installation

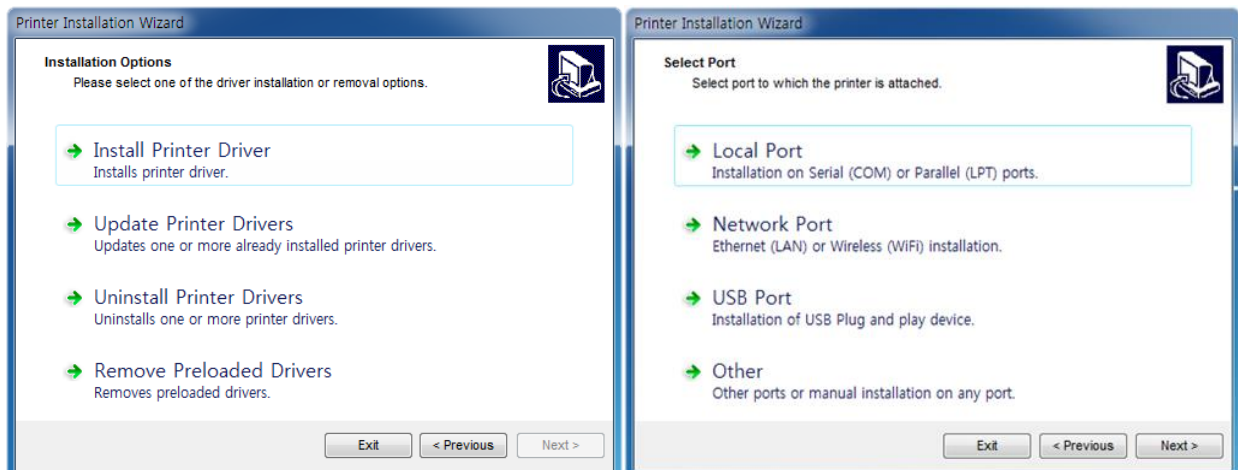
- Run "Software_Label_Windows_Driver_V5.x.x.xxxx.exe" to install printer driver, and follow the steps below.

4-1-1 Introductory Steps

- 1) Set the installation directory, and then click “**N**ext”.
Click “**N**ext” again on “Printer Installation Wizard” window.



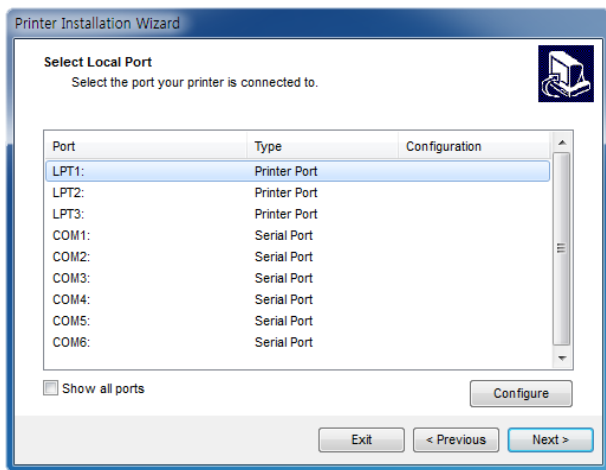
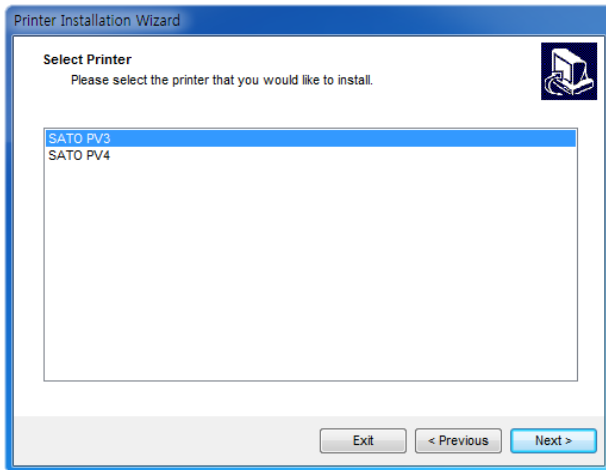
- 2) Click “**I**nstall Printer Driver”, and then select the port to which the printer is attached.
Refer to the contents in this manual about printer port installation.




Ports	Description	Reference
Local port	Serial (COM) or Parallel (LPT) ports	4-1-2
Network port	Ethernet (LAN) or Wireless (Wi-Fi) installation	4-1-3
USB port	USB Plug and play device.	4-1-4
Other	Manual installation on any port.	4-1-5

4-1-2 Local Port


- 1) Select the printer model and the local port to which your printer is connected.



Function	Description
Show all ports	display all available ports on the system.
Configure	set the appropriate port-specific values.

 **Note** If COM port for Bluetooth paired with the HOST(PC) is not in the port list, stop the installation and restart the computer. After restarting, start the installation procedure again.

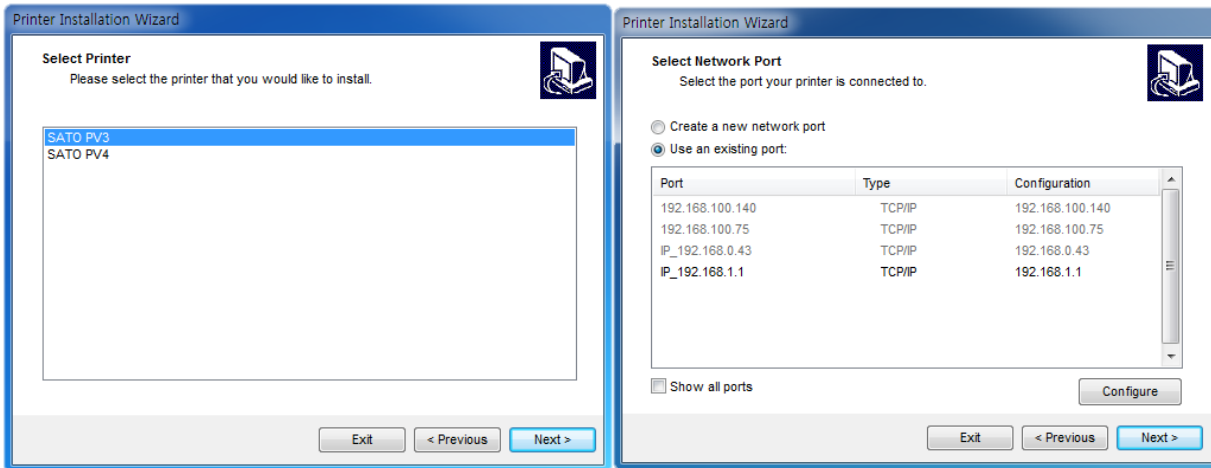
2) To configure the currently selected local port, click Configure. System dialog opens allowing you to set the appropriate port-specific values.

 **Note** Port(s) which are already taken by other printers are grayed-out.

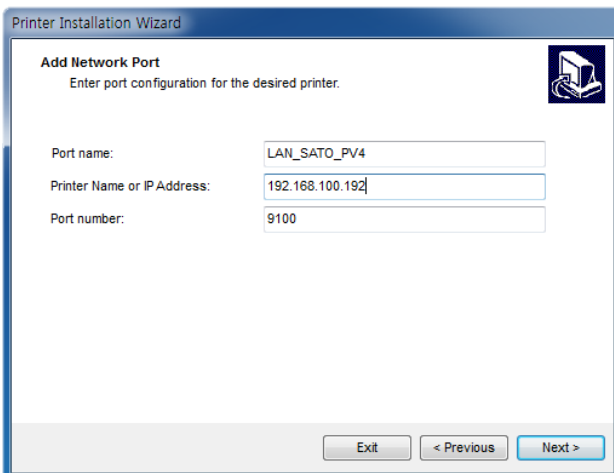
3) Click “Next” to proceed to Printer Options step. Refer to the description of printer options in 4-1-6 of this manual.

4-1-3 Network Port

- 1) Select the printer model and the network port to which your printer is connected. If there is no network ports to which your printer is connected in the list, select “Create a new network port” and then click “Next”.



“Create a new network port” option opens the Add Network Port window. Enter port configuration for the desired printer, and then click “Next”.



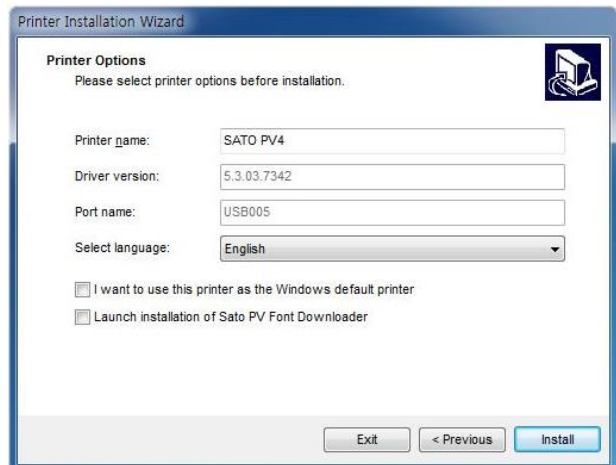
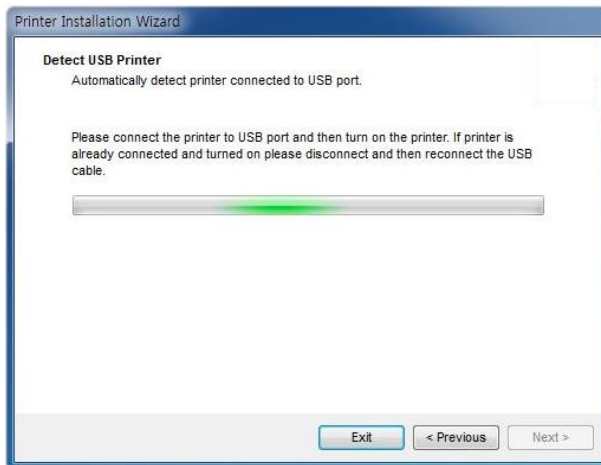
Installation Option	Description
Port name	defines the name for the newly created network port
Printer Name or IP Address	defines which printer (its name or IP address) connects to the newly created network port.
Port Number	number of the newly created network port. (default: 9100)

- 2) Click “Next” to proceed to Printer Options step. Refer to the description of printer options in 4-1-6 of this manual.

4-1-4 USB Port

When installing a USB printer, this application automatically detects the connected printer using its Plug and Play ID.

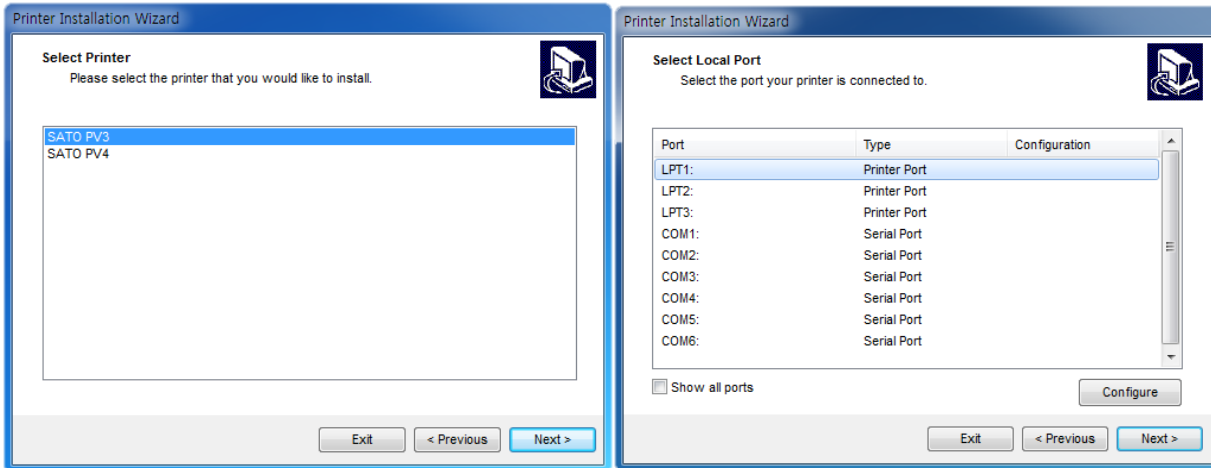
- 1) After connecting the printer to the USB port, turn on the printer. If the printer is already connected and powered on, disconnect and reconnect the USB cable.
- 2) If a printer connection is detected, it will automatically go to the end of the printer installation. Refer to the description of printer options in 4-1-6 of this manual and proceed to the next step.



4-1-5 Other Port

You can install the printer driver by manually selecting a dedicated port to connect to the printer or all available ports on your system. Follow the procedure below.

- 1) Select the appropriate printer model.



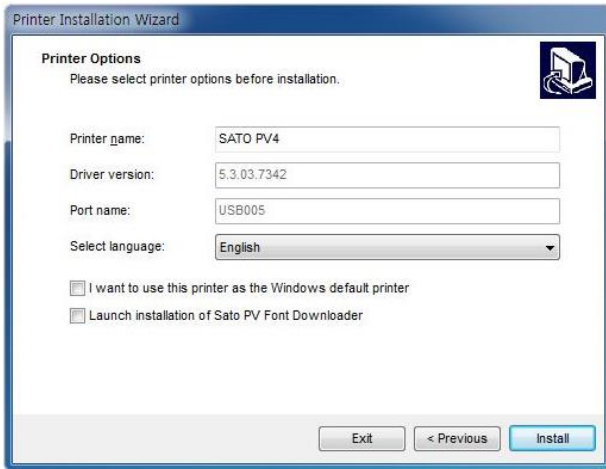
- 2) Select the port for connecting the printer. The port can either be an existing or a newly added one.

Function	Description
<u>A</u> dd... button	Creates a new port. Press the button to open Advanced TCP/IP Port Configuration window.
<u>C</u> onfigure button	Configures the local port

- 3) Click "Next" to proceed to Printer Options step. Refer to 4-1-6 in this manual.

4-1-6 Printer Options

Printer Options window allows you to set printer identity parameters.

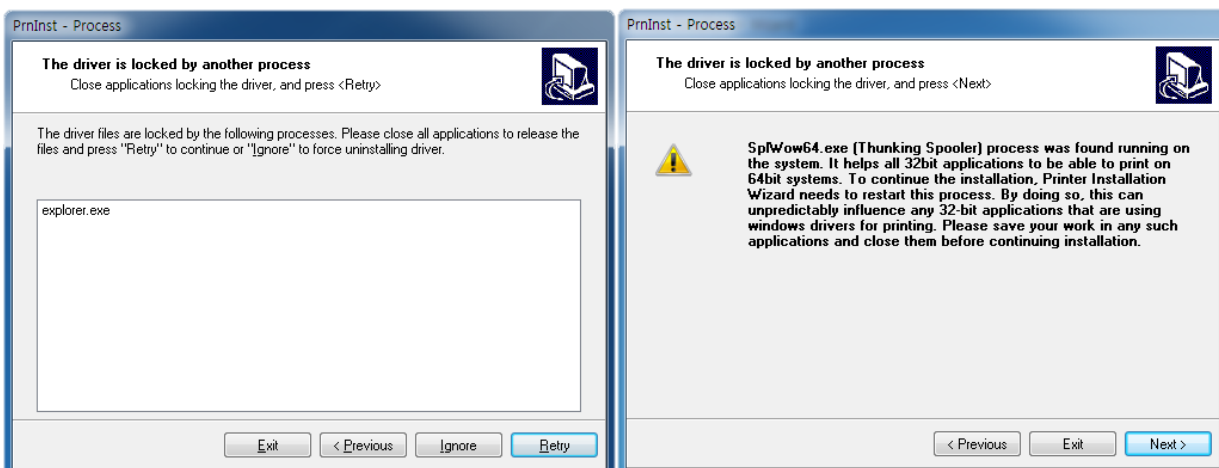


Printer Option	Description
Printer Name	sets custom printer name to make it easily recognizable after the installation.
Driver Version	information about the current driver version.
Port Name	information about the currently used port.
Select language	defines driver user interface language.

Enable “I want to use this printer as the Windows default printer” to set the current printer as the default system printer. And, enable “Launch installation of SATO PV Font downloader” to put true type fonts into the printer.

Click the "Install" to start installing the printer driver and font downloader. Please refer to 4-1-7 of this manual for a description of the additional installation procedure for the font downloader.

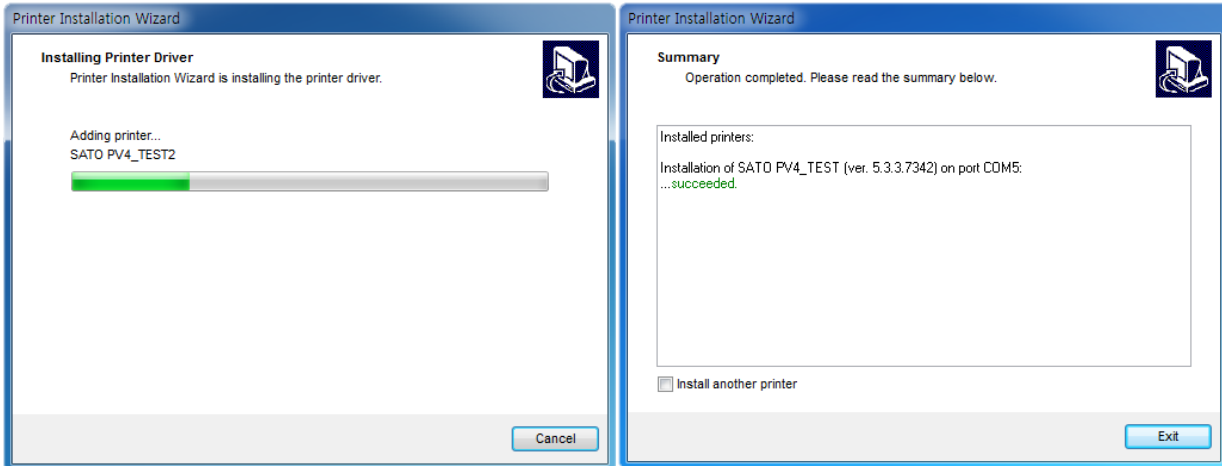
During the installation, uninstallation or update of the printer driver, “PrnInst.exe” application checks for applications that could lock the printer driver files. If detected, following windows can appear.



Printer Driver

In this case, you have the following options, but please proceed with the installation by clicking the "Ignore" or "Next" button

- Continue with the installation. New files are copied – installation is complete after restarting the computer.
- Stop the installation and restart the computer. After restarting, repeat the installation procedure.
- Close the applications that are locking the printer driver.

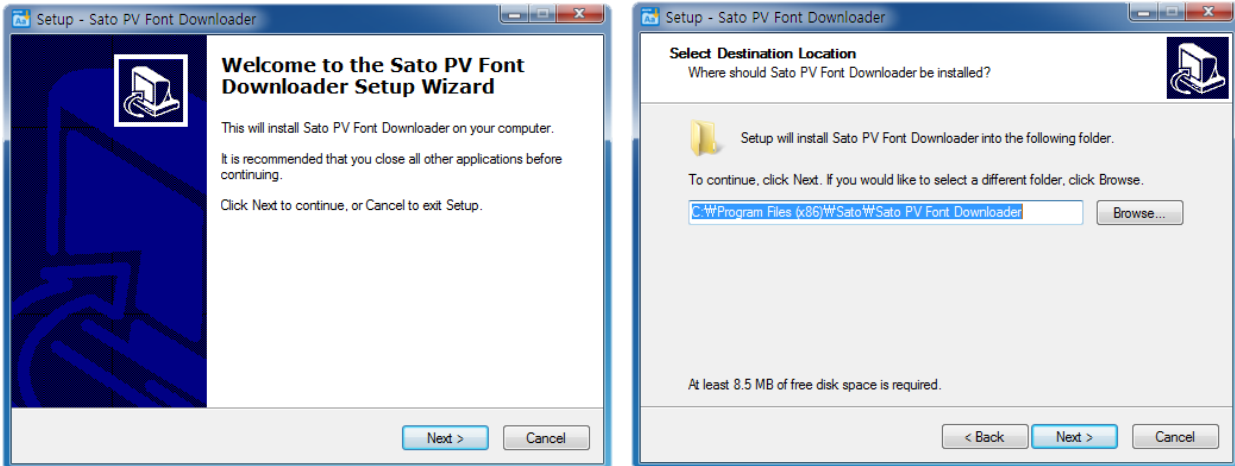


When the installation is complete, you will see the word "Succeeded". If you want to continue the installation of the printer, check the "Install another printer" checkbox and then click "Next". To exit the installation, click "Exit".

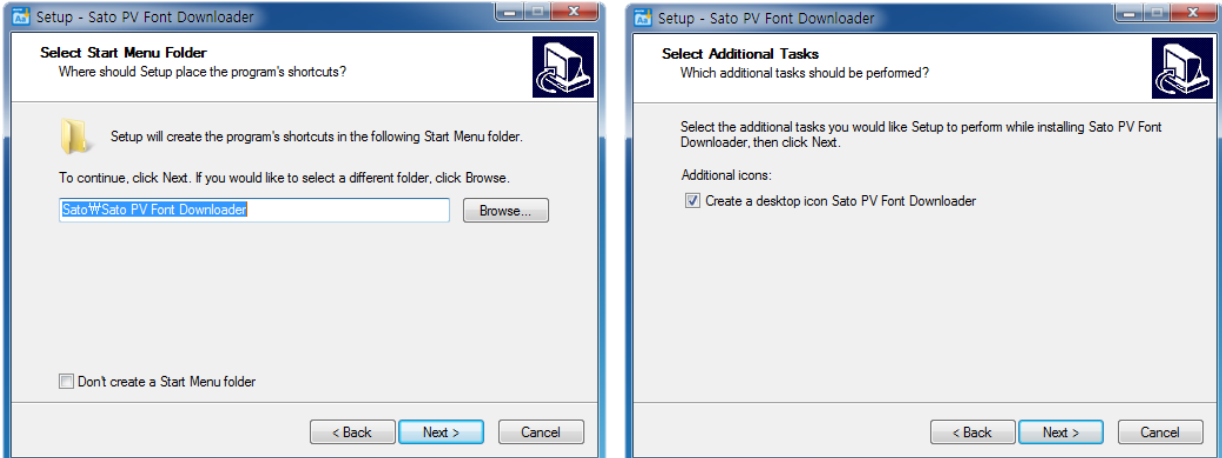
4-1-7 Font Downloader Installation

To install the font downloader, follow the procedure below.

- 1) Click "Next" to proceed to next step.
- 2) Specify the installation folder and click "Next".

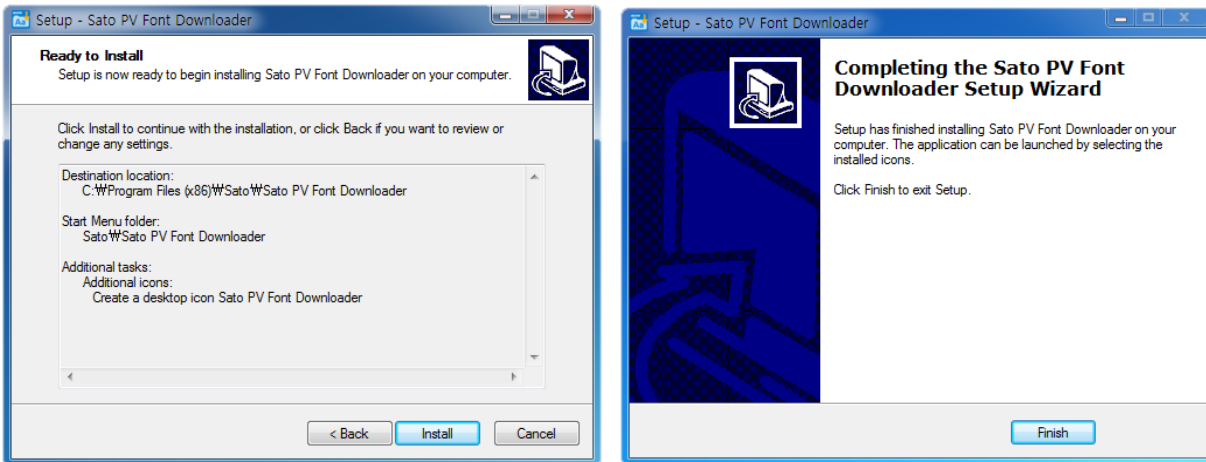


- 3) Check the name of the Start Menu folder to be created and click "Next".
- 4) Decide whether to create the shortcut icon and click "Next".



5) Review the contents for the installation and click the "Install".

6) Click "Finish" to complete the installation.



4-2 Printer Driver Uninstallation

- There are two buttons for deleting the printer driver. To delete everything related to the printer driver completely, refer to the manuals described in 4-2-1 and 4-2-2 of this manual, and then click that button to delete the printer driver.



Note

Make sure you are logged in as a user with sufficient rights before starting the driver removal process.

When removing a printer driver, make sure that:

- The printer is not set as a default printer.
- There are no print jobs waiting in the print queue.
- The printer is not locked by the Windows spooler process.

If you are unable to delete the printer driver, perform one of the following actions:

- Restart Windows spooler.
- Delete print jobs from the Windows spooler.
- Computer restart is required in certain cases.

4-2-1 Printer Driver Uninstallation

To remove a printer driver using “PrnInst.exe” application, follow these steps below.

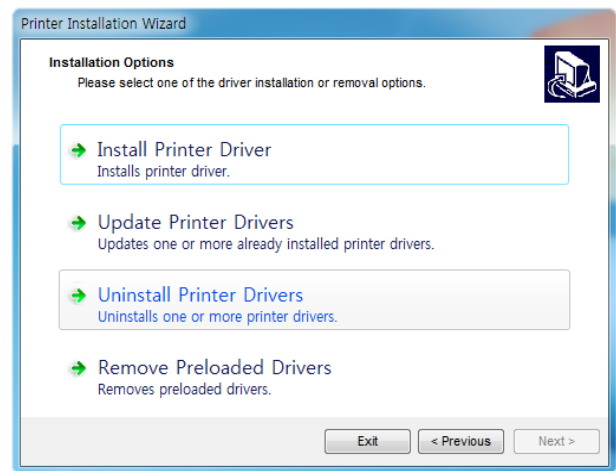
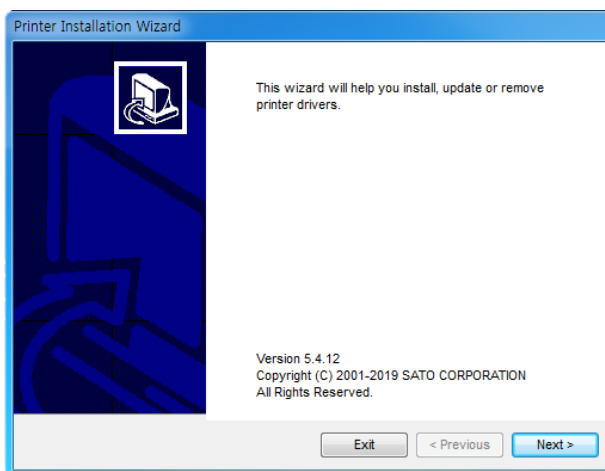
- 1) Run “PrnInst.exe” application. This application can be found in the default printer driver installation path. If you cannot find it, run the “Software_Label_Windows_Driver_V5.x.x.xxxx.exe” application.



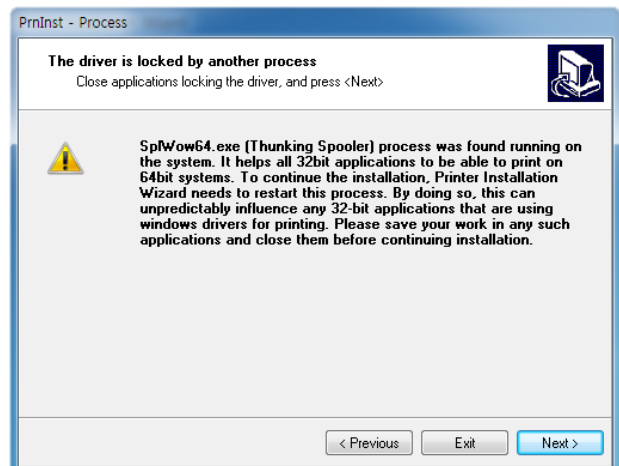
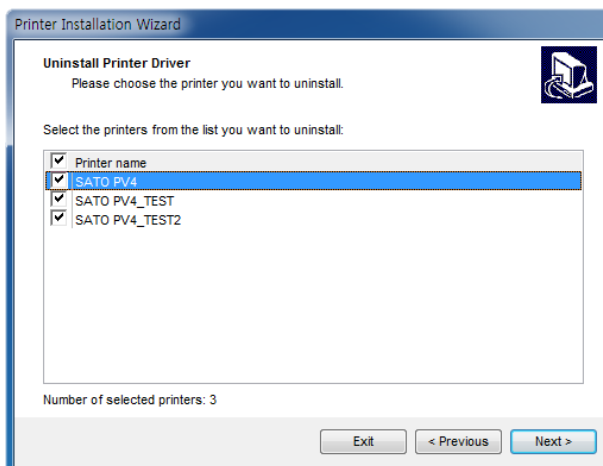
Note

Default Installation Path: C:\Program Files (x86)\SATO\Printer drivers\Label Windows Driver

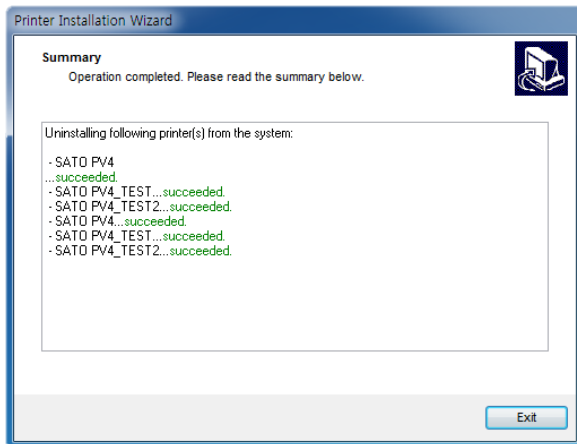
- 2) Click “Next” on the “Printer Installation Wizard” window.
- 3) Click “Uninstall Printer Drivers”.



- 4) Select the printer to be removed, and then click “Next”. If you see a warning about “Splwow64.exe” during removing printer driver, click “Next”. After clicking “Next”, “PrnInst.exe” application restarts the Splwow64.exe process. This unlocks the printer driver and completes the uninstallation process.



5) Click "Exit" to complete the uninstallation.



4-2-2 Printer Driver Package Uninstallation

To remove a printer driver package using “PrnInst.exe” application, follow these steps below.

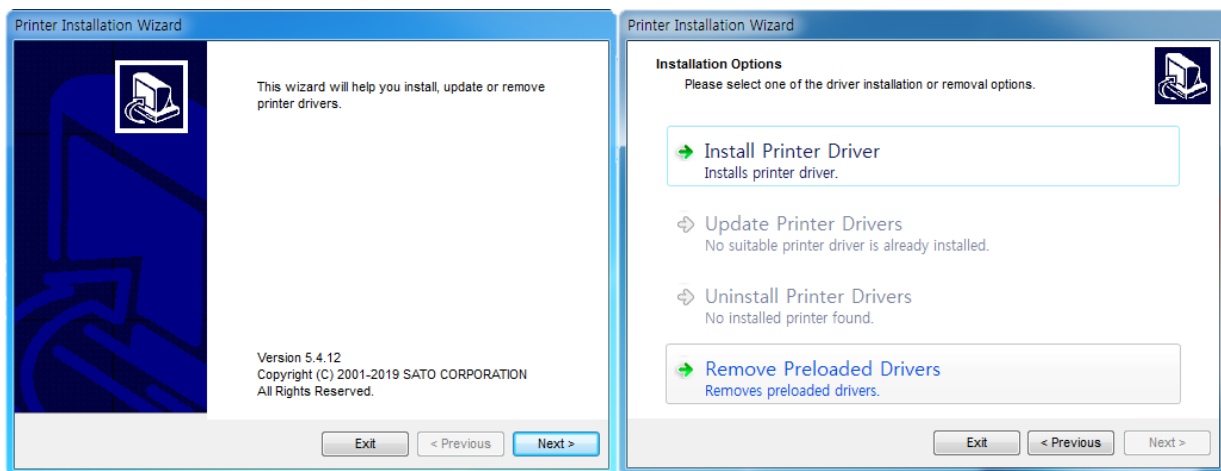
- 1) Run “PrnInst.exe” application. This application can be found in the default printer driver installation path. If you cannot find it, run the “Software_Label_Windows_Driver_V5.x.x.xxxx.exe” application.



Note

Default Installation Path: C:\Program Files (x86)\SATO\Printer drivers\Label Windows Driver

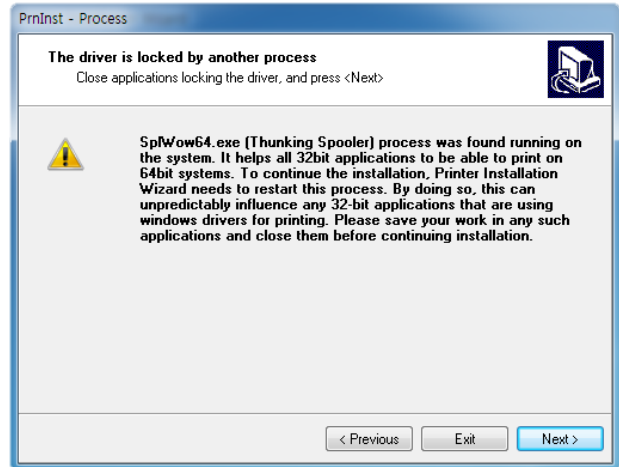
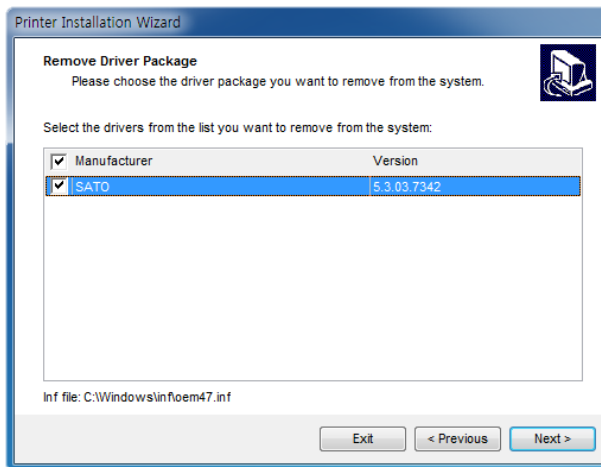
- 2) Click “Next” on the “Printer Installation Wizard” window.
- 3) Click “Remove Preloaded Drivers”.



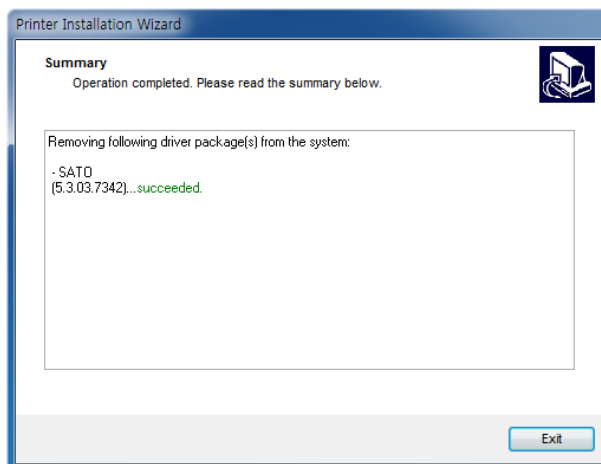
Note

“The Remove Preloaded Drivers” option only removes the driver installation files from the system. To uninstall a driver, select option “Uninstall Printer” in the Options window.

- 4) Select the driver to be removed, and then click "Next". While removing the driver package, the following warning message may appear. If you click the "Next (N)" button, you can restart the "Splwow64.exe" process to continue the removing procedure.



- 5) Click "Exit" to complete the uninstallation.



4-3 Printer Driver Update

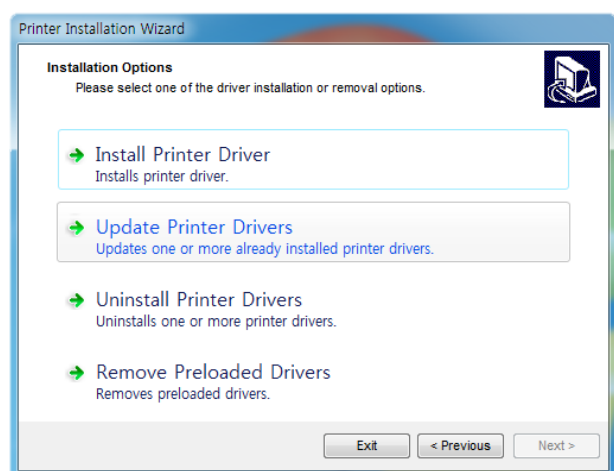
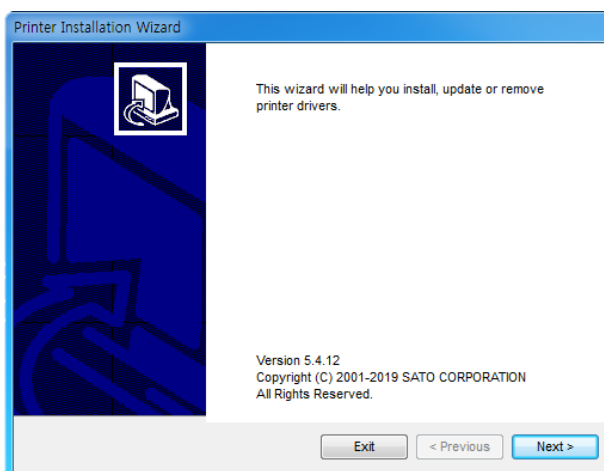
- To update a printer driver using “PrnInst.exe” application, follow these steps below.
 - 1) Run “PrnInst.exe” application. This application can be found in the default printer driver installation path. If you cannot find it, run the “Software_Label_Windows_Driver_V5.x.x.xxxx.exe” application.



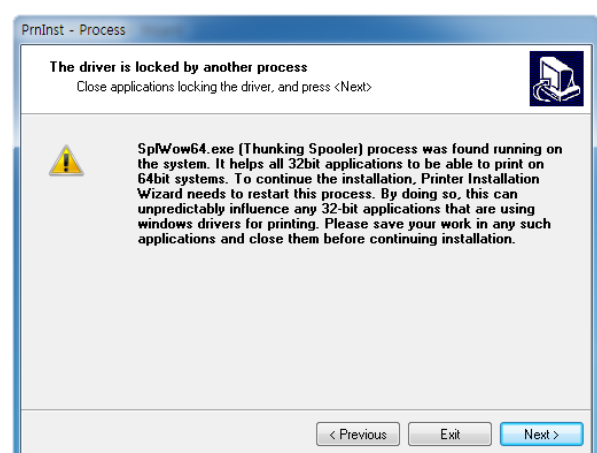
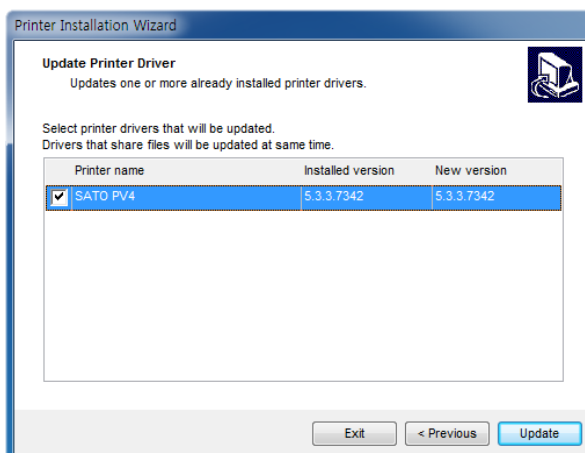
Note

Default Installation Path: C:\Program Files (x86)\SATO\Printer drivers\Label Windows Driver

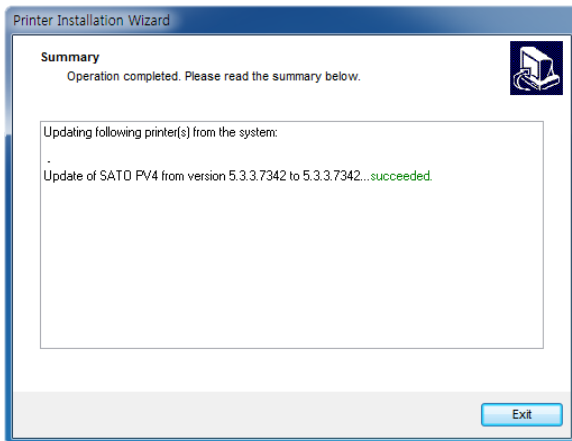
- 2) Click “Next” on the “Printer Installation Wizard” window.
- 3) Click “Update Printer Drivers”.



- 4) “Select” a printer to update its driver.
- 5) Compare Installed version column with New version column, and then click “Uppdate”. If you see a warning about “Splwow64.exe” during printer driver update, click “Next”. After clicking “Next”, “PrnInst.exe” application restarts the Splwow64.exe process. This unlocks the printer driver and completes the upgrade process.



6) Click “Exit”.



4-4 Steps for downloading fonts

- To download true type fonts to the printer, double-click the "SATO PV Font Downloader" icon on the desktop to launch the program and follow the procedure below.



Caution

Only hexadecimal characters in the range 0x00 to 0xFF can be downloaded. In other words, Korean, Chinese and Japanese characters are not downloadable.

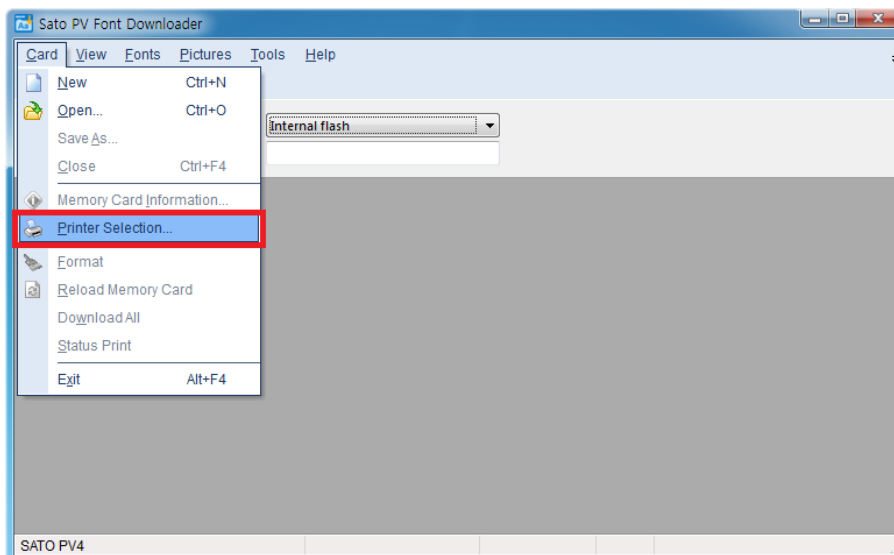
- 1) Run the font download application as an administrator.



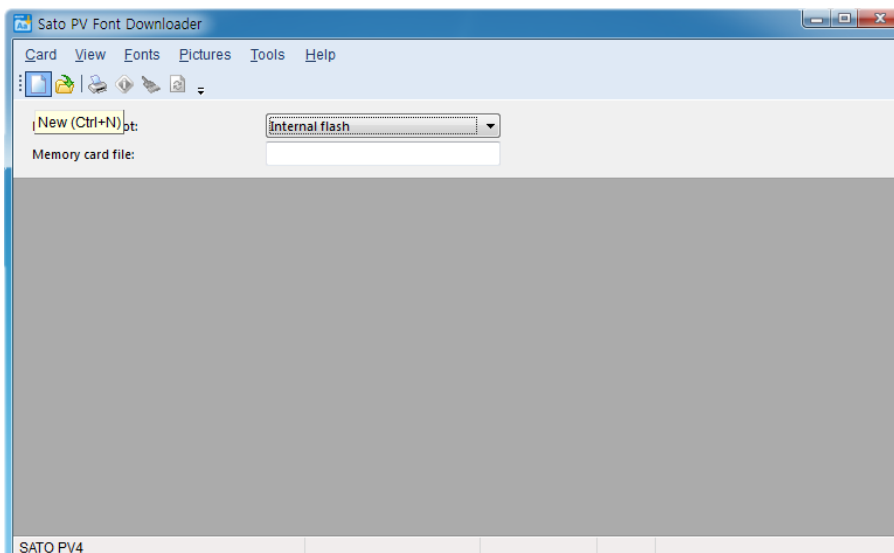
Note

Default Installation Path: C:\Program Files (x86)\SATO\Font Download

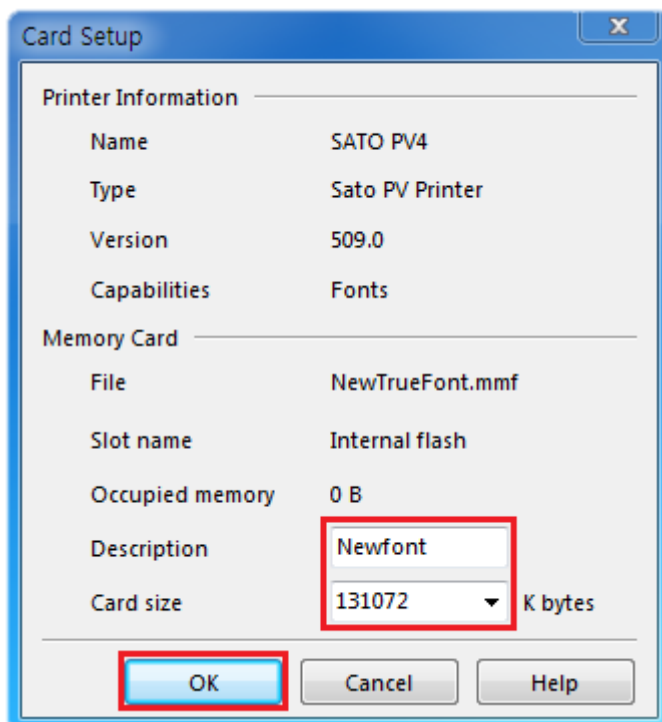
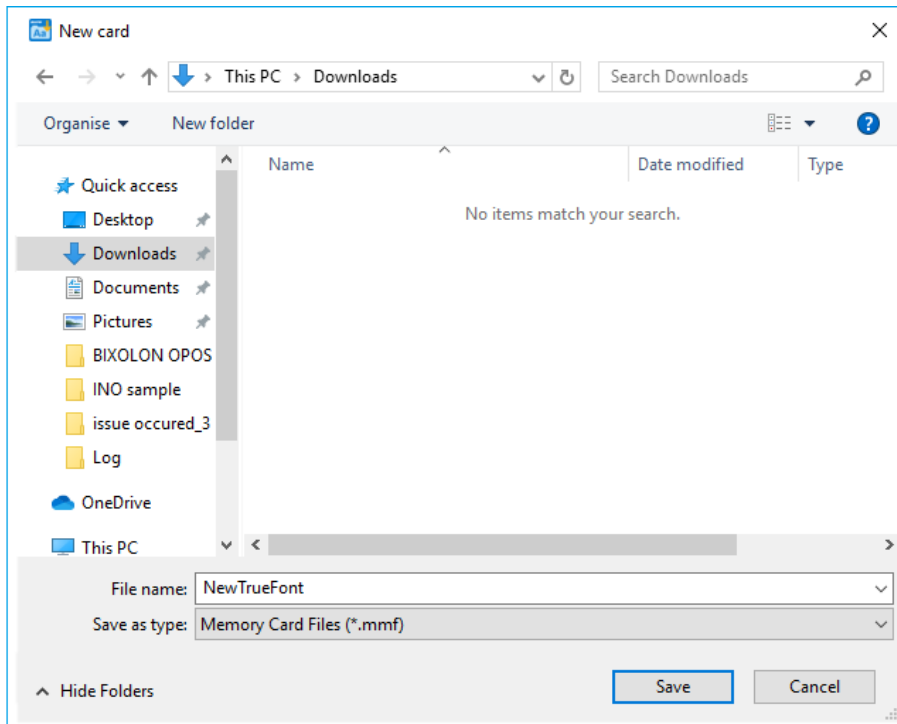
- 2) In the "Card" menu, click "Printer Selection" to select the printer to which the font will be downloaded.



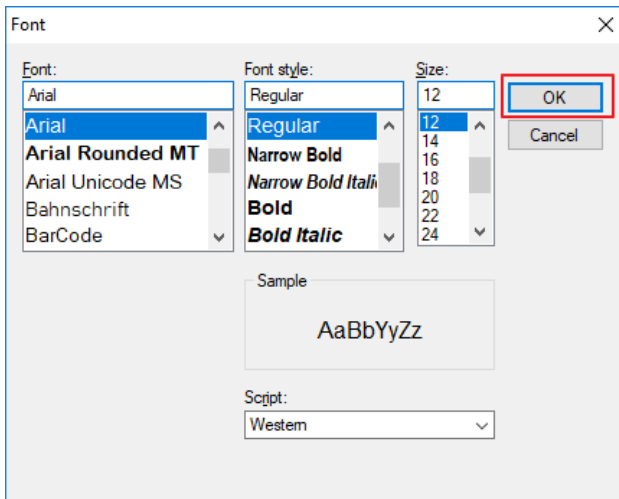
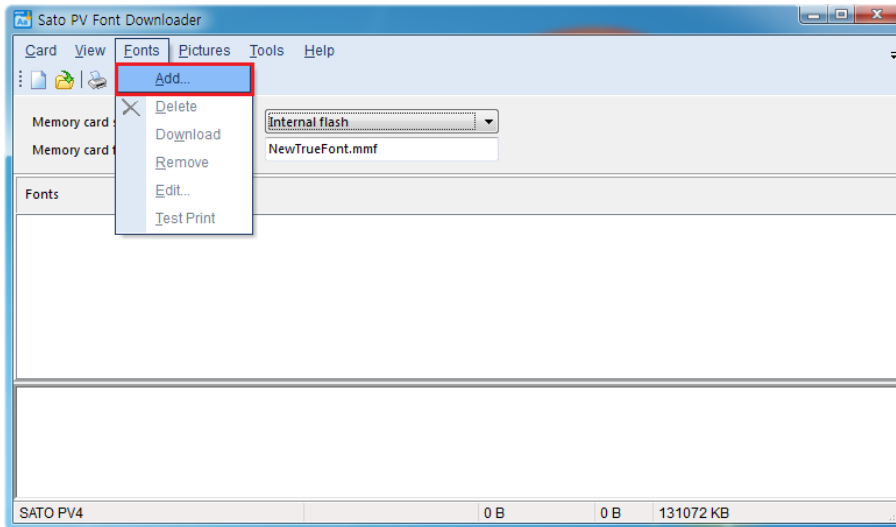
- 3) Click the New icon.



4) Set the path and name for the memory card file to be saved and click "Save".



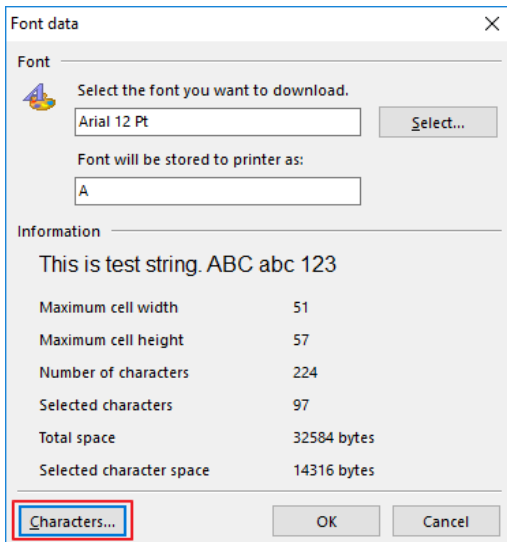
- 5) In the "Fonts" menu, click "Add...". Select the font and size you want to download and click "OK".



- 6) Check the information about the font to be downloaded. Click "Characters" to select the characters of the font to be downloaded.

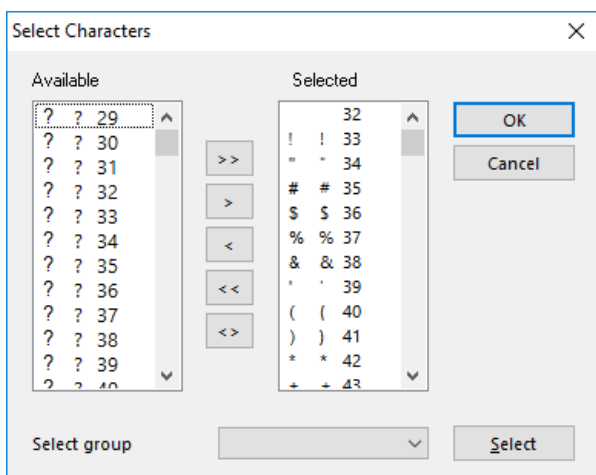
Note

- It is recommended to use the font name that is entered automatically, because manually typing the font name can cause backward compatibility problems.
- For the font name to be stored to the printer, single characters a - z and 0 - 9 are not allowed.

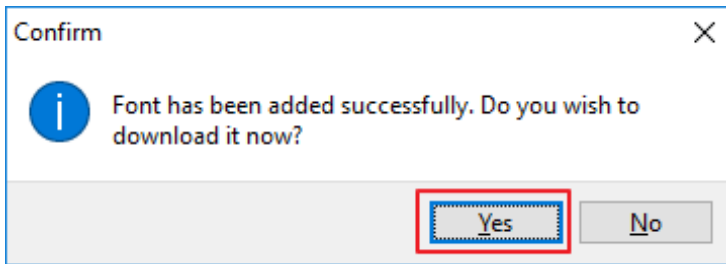


Symbol	Description
Available	Characters that can be added
Selected	Characters already added
>>	Add all the characters that can be added
>	Add selected characters
<	Remove selected characters
<<	Remove all added characters
<>	Replace the characters that can be added and the characters already added

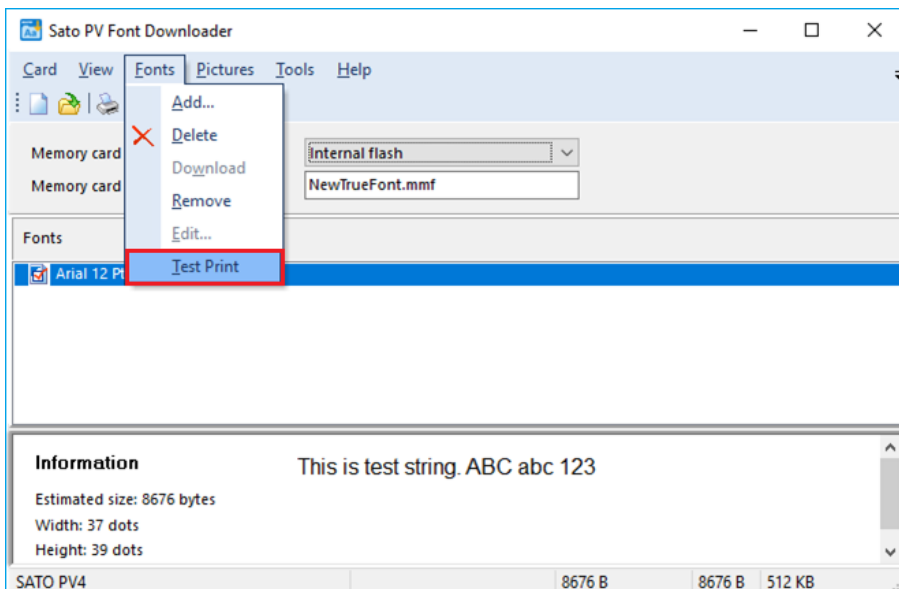
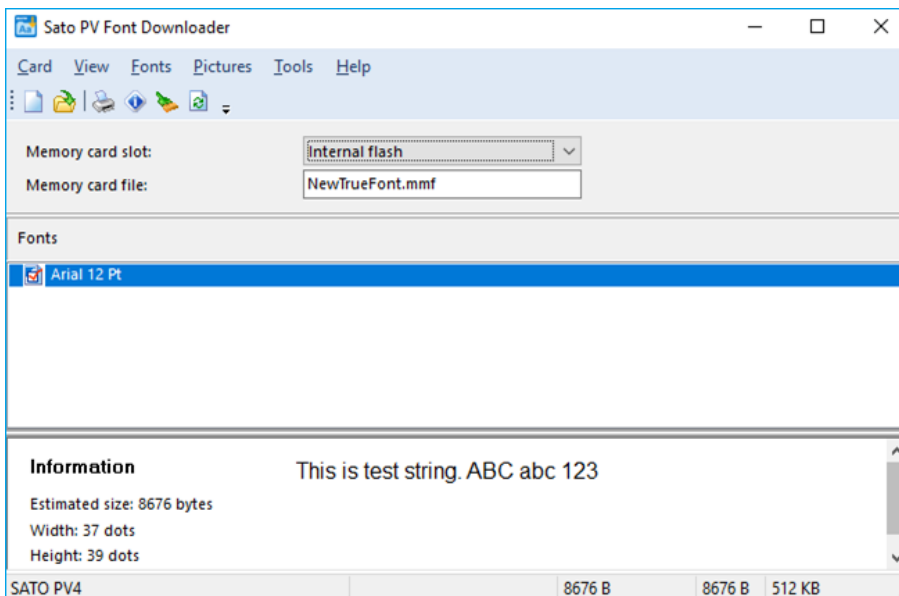
- 7) Check the character information to be added or deleted and click "OK".



8) Click "Yes" to proceed with the font download.



9) If the font download succeeds, the downloaded font is displayed in the font list.



10) In the "Fonts" menu, click "Test Print" to check if the fonts are downloaded normally. Downloaded fonts can also be printed using SLCS commands and can be used in a manner similar to the example below.

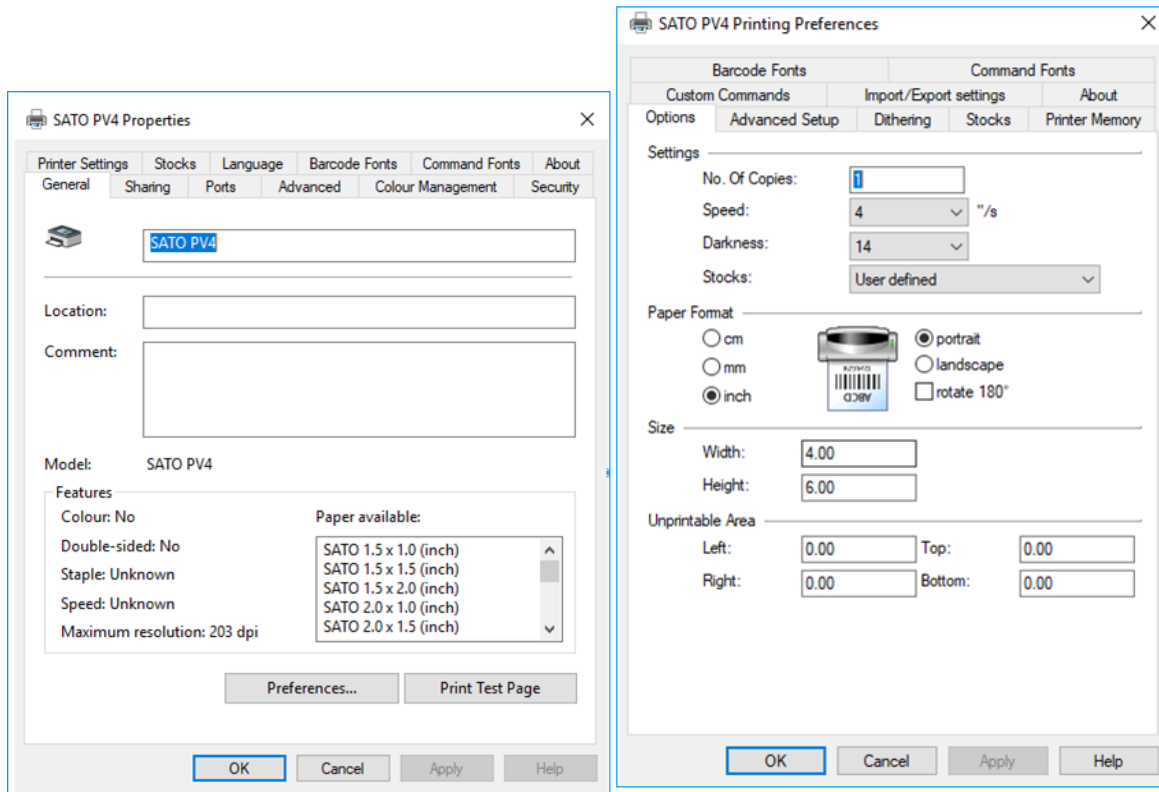
Eg) T10,10,**A**,1,1,0,0,N,N,'This is test'

Eg) T10,10,**B**1,1,0,0,N,N,'This is test'

5. Printer Driver Settings

5-1 Printing Preferences

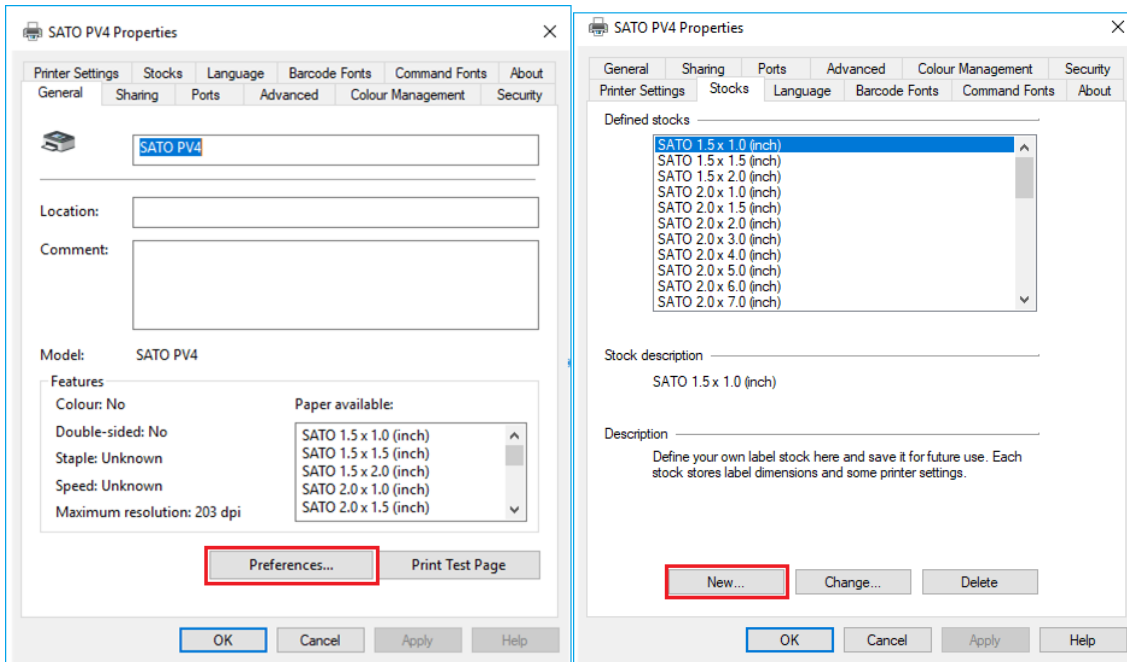
- The following functions can be configured after installing the printer driver.



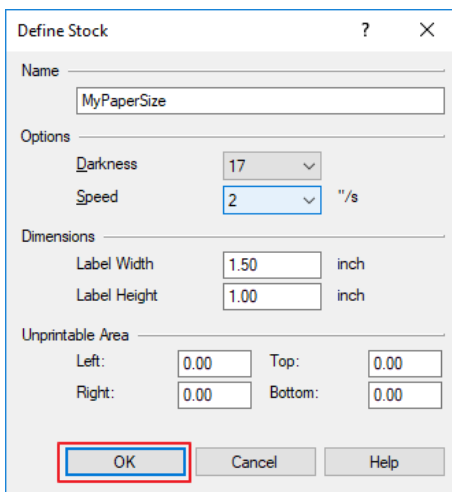
NO	Feature	Description
1	No. Of Copies	The number of copies
2	Speed	Set the printing speed
3	Darkness	The darkness level of printouts.
4	Portrait	The printer prints in portrait orientation.
5	Landscape	The printer prints in landscape orientation.
6	Rotate 180	The option of rotation 180 degree.
7	Width	Set the width of the paper.
8	Height	Set the height of the paper.
9	Unprintable Area	Set the unprintable area.

5-2 Adding new paper size

1) Click “Preferences...” and Click “New...”



2) Set a value you want and then click “OK”.



6. Specifications

6-1 Specifications

Model	DPI	Max Printable Width	Print Speed Support
SATO PV3	203 dpi	576 dots	1,2,3,4,5ips
SATO PV4	203 dpi	832 dots	1,2,3,4ips

6-2 Paper Size

1.5 x 1.0 inch (38.1 x 25.4 mm)	3.5 x 1.0 inch (88.9 x 25.4 mm)
1.5 x 1.5 inch (38.1 x 38.1 mm)	3.5 x 1.5 inch (88.9 x 38.1 mm)
1.5 x 2.0 inch (38.1 x 50.8 mm)	3.5 x 2.0 inch (88.9 x 50.8 mm)
2.0 x 1.0 inch (50.8 x 25.4 mm)	3.5 x 3.0 inch (88.9 x 76.2 mm)
2.0 x 1.5 inch (50.8 x 38.1 mm)	3.5 x 4.0 inch (88.9 x 101.6 mm)
2.0 x 2.0 inch (50.8 x 50.8 mm)	3.5 x 6.0 inch (88.9 x 152.4 mm)
2.0 x 3.0 inch (50.8 x 76.2 mm)	4.0 x 1.0 inch (101.6 x 25.4 mm)
2.0 x 4.0 inch (50.8 x 101.6 mm)	4.0 x 1.5 inch (101.6 x 38.1 mm)
2.0 x 5.0 inch (50.8 x 127.0 mm)	4.0 x 2.0 inch (101.6 x 50.8 mm)
2.0 x 6.0 inch (50.8 x 152.4 mm)	4.0 x 3.0 inch (101.6 x 76.2 mm)
2.0 x 7.0 inch (50.8 x 177.8 mm)	4.0 x 4.0 inch (101.6 x 101.6 mm)
2.0 x 8.0 inch (50.8 x 203.2 mm)	4.0 x 6.0 inch (101.6 x 152.8 mm)
2.5 x 1.0 inch (63.5 x 25.4 mm)	4.0 x 8.0 inch (101.6 x 203.2 mm)
2.5 x 1.5 inch (63.5 x 38.1 mm)	4.0 x 12.0 inch (101.6 x 304.8 mm)
2.5 x 2.0 inch (63.5 x 50.8 mm)	
3.0 x 1.0 inch (76.2 x 25.4 mm)	
3.0 x 1.5 inch (76.2 x 38.1 mm)	
3.0 x 2.0 inch (76.2 x 50.8 mm)	
3.0 x 3.0 inch (76.2 x 76.2 mm)	
3.0 x 4.0 inch (76.2 x 101.6 mm)	
3.0 x 6.0 inch (76.2 x 152.4 mm)	

6-3 Barcode Fonts

- Barcode fonts below can be used from any windows application. Barcode symbol will not be displayed. Only barcode data will be shown on screen but barcode will print correctly.

No	Font Name	1d / 2d
1	SATO CODABAR	One-dimensional Barcodes
2	SATO CODE128	
3	SATO CODE128 AUTO A	
4	SATO CODE128A	
5	SATO CODE128B	
6	SATO CODE128C	
7	SATO CODE39	
8	SATO CODE93	
9	SATO EAN13	
10	SATO EAN8	
11	SATO I2OF5	
12	SATO IMB	
13	SATO UCC/EAN128	
14	SATO UPC-A	
15	SATO UPC-E	
16	SATO MAXICODE	
17	SATO PDF417	
18	SATO QR	
19	SATO DATAMATRIX	

Copyright

© SATO COPORATION. All rights reserved.

This user manual and all property of the product are protected under copyright law. It is strictly prohibited to copy, store, and transmit the whole or any part of the manual and any property of the product without the prior written approval of SATO COPORATION. The information contained herein is designed only for use with this SATO product. SATO is not responsible for any direct or indirect damages, arising from or related to use of this information.

- The SATO logo is the registered trademark of SATO COPORATION.
- All other brand or product names are trademarks of their respective companies or organizations.

SATO COPORATION. maintains ongoing efforts to enhance and upgrade the functions and quality of all our products.

In the following, product specifications and/or user manual content may be changed without prior notice.

Caution

Some semiconductor devices are easily damaged by static electricity. You should turn the printer "OFF", before you connect or remove the cables on the rear side, in order to guard the printer against the static electricity. If the printer is damaged by the static electricity, you should turn the printer "OFF".

