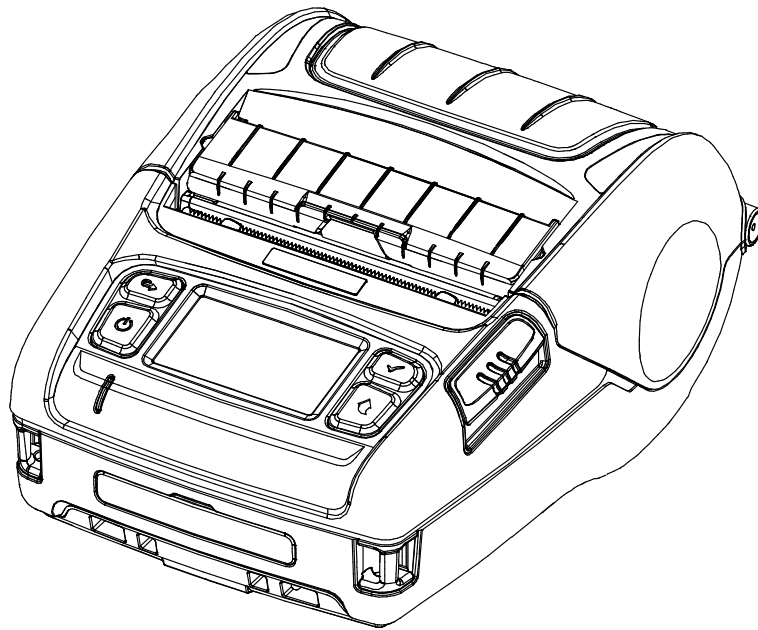




Installation Guide

OPOS Driver

Rev. 1.00



Introduction

This is a manual for SATO OPOS DRIVER program, SATO OPOS DRIVER setup, and making application using SATO OPOS DRIVER.

Before use SATO devices, set and configure devices by using SATO OPOS driver Setup Utility.

Throughout this manual, “OLE for Retail POS” is called “OPOS”.

Throughout this manual, “Unified for Retail POS” is called “UPOS”.

[Further Source]

OLE for Retail POS committee available from <http://monroecs.com/opus.htm>

It is advisable to read the contents of this manual carefully before using the printer for the first time.

Table of Contents

1. Environment	4
1-1 Features	4
1-2 Operation Environment	4
1-3 Accessible Devices	5
2. Installation and Uninstallation	6
2-1 Installation	6
2-2 Uninstallation.....	9
3. Precautions.....	9

1. Environment

1-1 Features

- Through these standardized API functions, you can develop POS systems easily.

1-2 Operation Environment

Operating System	Windows XP SP3 (32bit) Windows XP SP1 (64bit) Windows Server 2003 SP1 (32/64bit) Windows Vista (32/64bit) Windows Server 2008 (32/64bit) Windows 7 (32/64bit) Windows 8 (32/64bit) Windows 10 (32/64bit)
Supported Languages	Microsoft Visual Basic Version 6.0 Microsoft Visual C++ Version 6.0 Microsoft .NET(C#, VB)

1-3 Accessible Devices

1) Label Printer

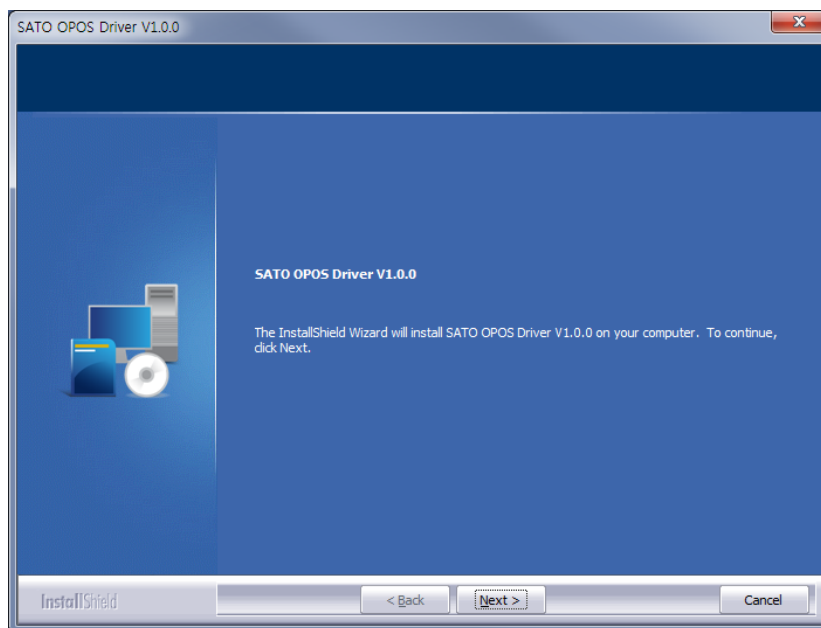
Model	Serial	USB	Bluetooth	Wireless Lan
PV3	O	O	O	O
PV4	O	O	O	O

2. Installation and Uninstallation

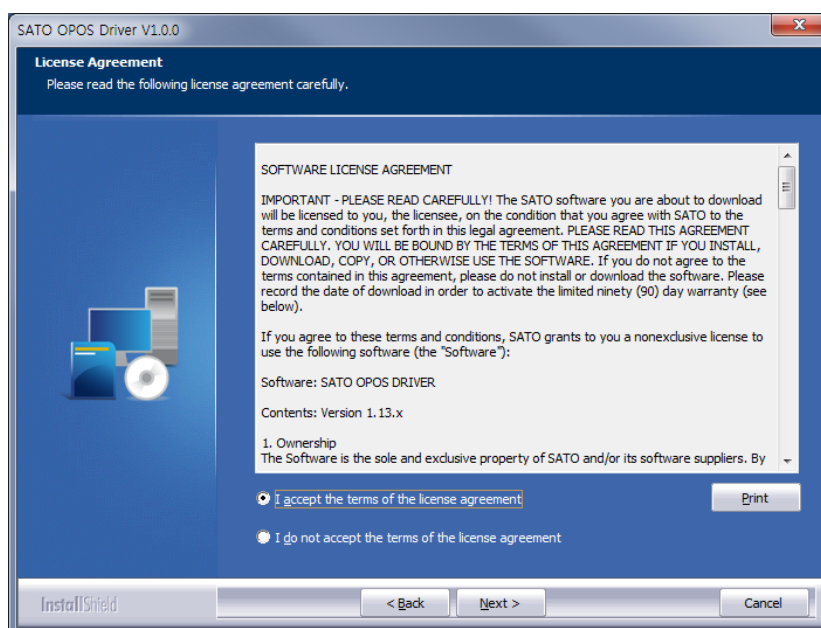
The SATO OPOS driver includes Control Object, Service Object, OPOS Setup Utility and sample programs.

2-1 Installation

- 1) Run the OPOS Driver installation file.
- 2) "Welcome" dialog is displayed.



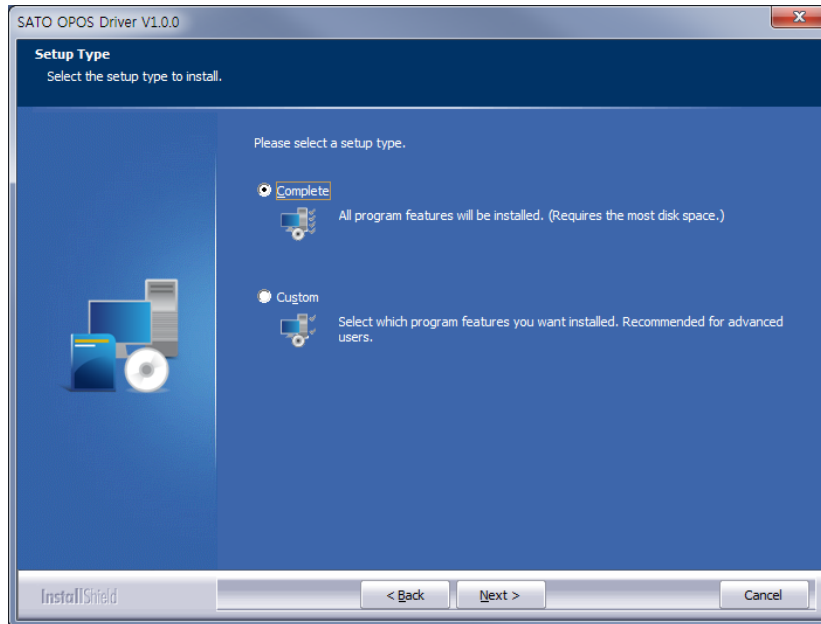
- 3) Agree on the software license. At the moment of installation, the user consents to the license policy of SATO.



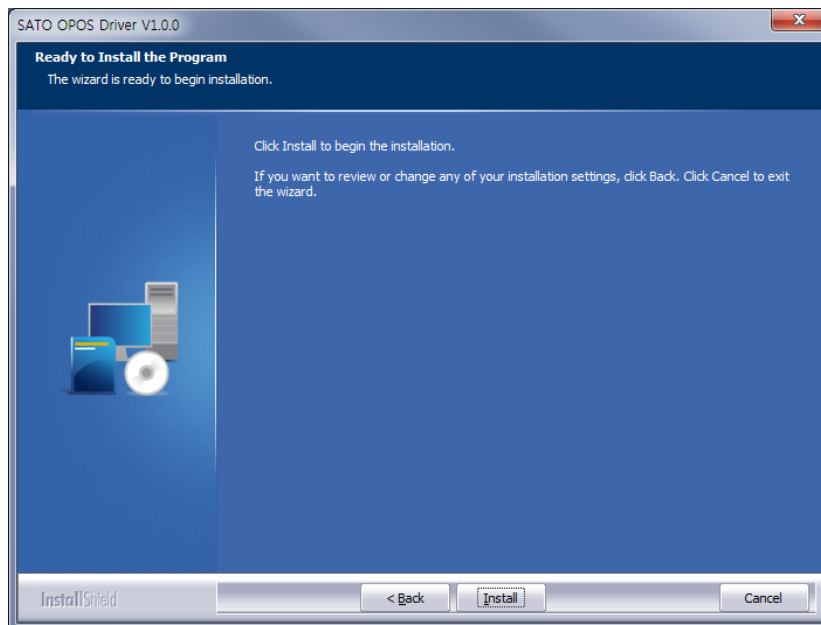
4) Please select a type of installation. The default installation location is as follows.

* 32bit OS: "C:\Program Files\OPOS\SATO OPOS DRIVER"

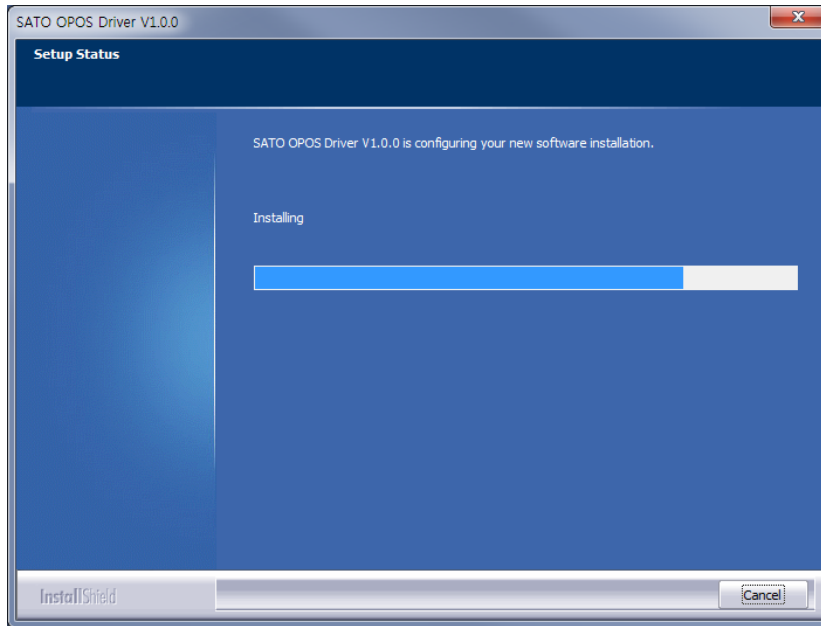
* 64bit OS: "C:\Program Files (x86)\OPOS\SATO OPOS DRIVER"



5) The Setup confirmation box will be displayed.

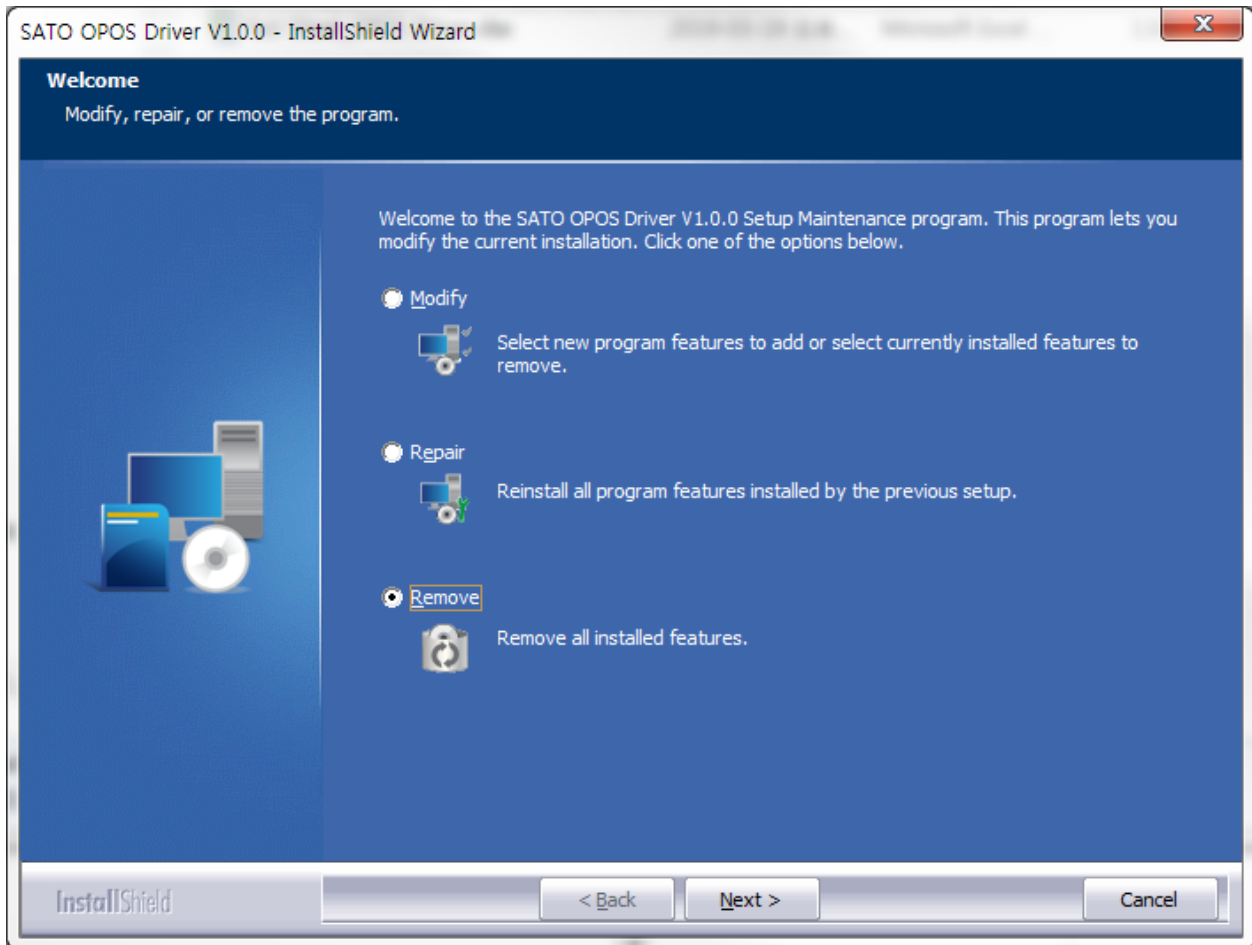


6) Installation of the OPOS driver will be proceeded.



2-2 Uninstallation

- To remove or modify SATO OPOS Driver, Select “SATO OPOS Driver” from “Add / Remove Programs” in Control Panel and remove or modify.



3. Precautions

- 1) The SATO OPOS software package installed supports the devices provided by SATO. Other devices do not guarantee normal operation.
- 2) If installed with other OPOS drivers, it may cause abnormal operation.

