



# **Printing Non-English Characters from SAP System**

## **User Manual**

**For SATO GT4e Series Printers**

## Copyrights

---

Any unauthorized reproduction of the contents of this document, in part or whole, is strictly prohibited.  
© 2023 SATO Corporation. All rights reserved.

## Limitation of Liability

---

SATO Corporation and its subsidiaries in Japan, the U.S and other countries make no representations or warranties of any kind regarding this material, including, but not limited to, implied warranties of merchantability and fitness for a particular purpose. SATO Corporation shall not be held responsible for errors contained herein or any omissions from this material or for any damages, whether direct, indirect, incidental or consequential, in connection with the furnishing, distribution, performance or use of this material.

Specifications and contents of this document are subject to change without notice.

## Trademarks

---

SATO is a registered trademark of SATO Holdings Corporation and its subsidiaries in Japan, the U.S. and other countries.

SAP® is a registered trademark of SAP SE or its affiliates in Germany and in several other countries.

NiceLabel® is a registered trademark of Euro Plus d.o.o in the U.S.A. and other countries.

All other trademarks are the property of their respective owners.

## Software Updating Disclaimer

---

While all efforts have been taken to ensure accuracy and currency of the information contained herein, there are instances where the contents of this document may be outdated. In that case, proceed to your local SATO regional website (<https://www.sato-global.com/drivers/redirect.html>) to check whether an updated document has been made available for your reference.

## Contact Information

---

Access the following site and select the region/country nearest to you.  
<https://www.sato-global.com/about/locations.html>

# ***Table of Contents***

<b>Table of Contents .....</b>	<b>3</b>
<b>1. Overview .....</b>	<b>4</b>
<b>2. Configuration at SAP Environment .....</b>	<b>5</b>
<b>3. Using SATO Firmware with Non-English Character Cartridge .....</b>	<b>7</b>
<b>4. Example .....</b>	<b>8</b>
<b>5. Appendix .....</b>	<b>11</b>
5.1. Command Specification .....	11
5.2. Built-in Font for Separate Cartridge .....	12

# Overview

# 1

This document is to explain how to print **Non-English characters** from SAP system with SAPscript (ITF file upload method) to SATO **GT4e series** printers.

The printing procedure of the following languages will be explained:

- Traditional Chinese, Big 5
- Simplified Chinese, GB2312
- Korean, KSC5601

Please refer to the following document on how to use NiceLabel Pro to create the ITF file:

[https://www.sato-global.com/files/Integration\\_Options/SAP/SAPscript/Label\\_Printing\\_from\\_SAP\\_using\\_SAPscript\\_Technology.pdf](https://www.sato-global.com/files/Integration_Options/SAP/SAPscript/Label_Printing_from_SAP_using_SAPscript_Technology.pdf)

**Note:**

- 1) It is assumed the Non-English characters are entered on the Text Editor or read from database in the SAP environment. NiceLabel Pro is not able to create ITF file containing Non-English characters.
- 2) It is also assumed that the SAP system is Unicode Compliant, or at least supports inputting and displaying of the required Non-English characters.

# Configuration at SAP Environment

# 2

The SATO device type “ZLB\_SAT.pri” is using codepage 1103 (IBM PC Multilingual 850). This codepage is not able to support Non-English character set.

Codepage **8300**, Traditional Chinese (based on Big5, MS CP950) has to be used in order to print the Traditional Chinese characters.

Codepage **8400**, Simplified Chinese (based on GB2312-EUC, MS CP936) has to be used in order to print the Simplified Chinese characters.

Codepage **8500**, Korean (based on KSC5601-1992, MS CP949) has to be used in order to print the Korean characters.

The screenshot shows the SAP Spool Administration interface for device type ZLB\_STC. The window title is "Spool Administration: Device Type (Display)". The device type is "ZLB\_STC" and the name is "SATO label printer 8300". The "Print Controls" tab is active, showing the following configuration:

Section	Field	Value
Attributes	Version	5
	SAPscript handling	
SAPscript handling	Driver	Line printer driver II
	<input type="checkbox"/> Page printer	
List handling	Printer driver	Do not use printer driver for ABAP list print
	Argument	
	Printer character set	
Printer character set	1. Character set	8300 Traditional Chinese (Big5, based on MS CP950)
	Synt. character set	0

Figure 1 Using 8300 character set for Traditional Chinese

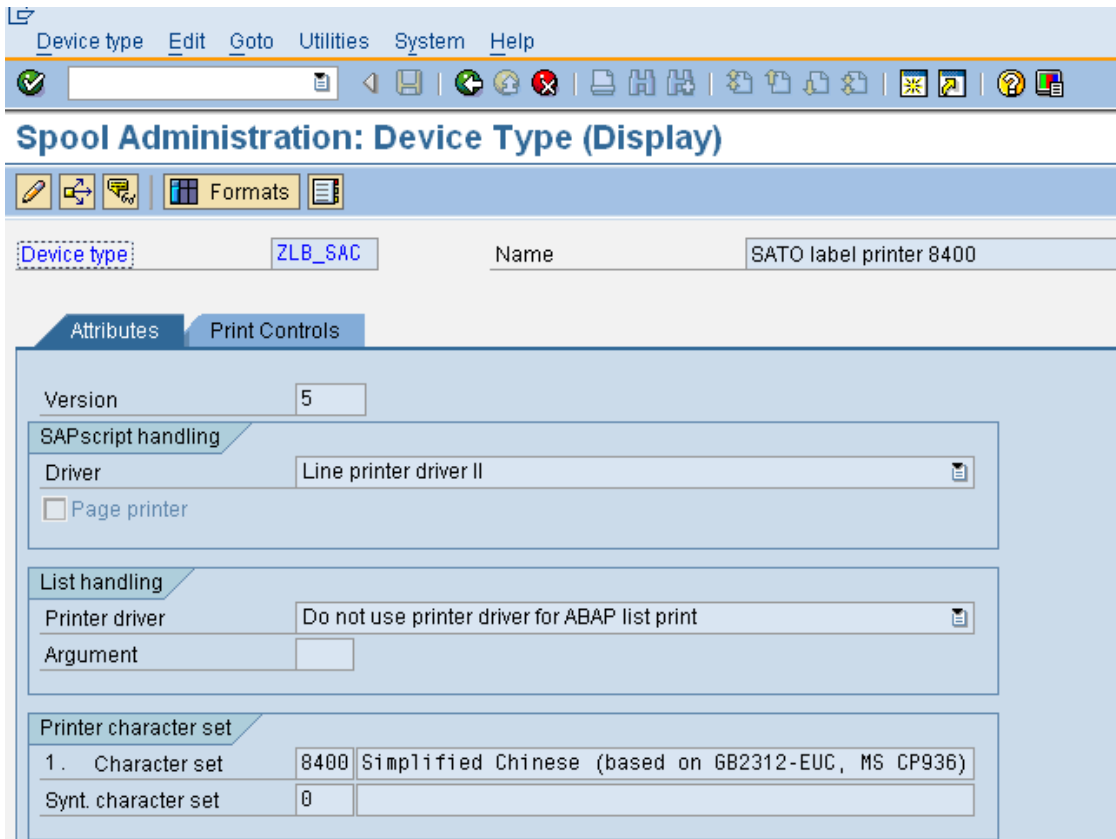


Figure 2 Using 8400 character set for Simplified Chinese

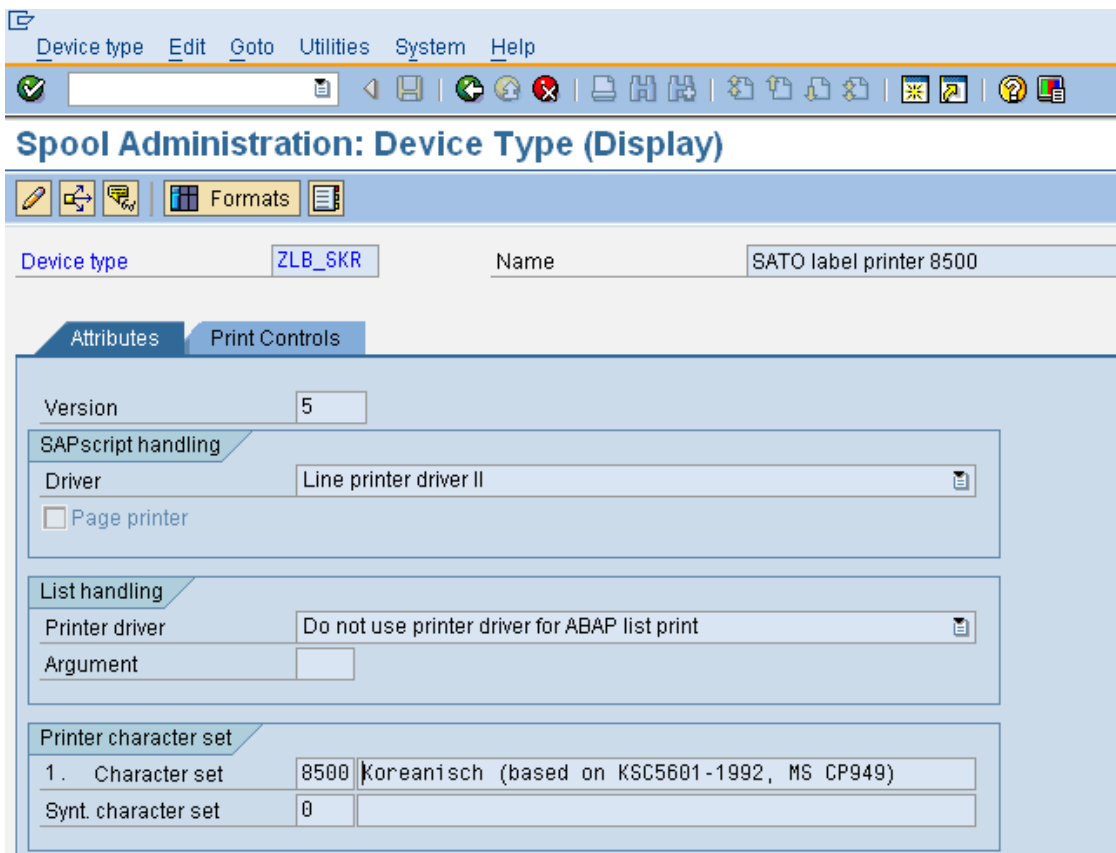


Figure 3 Using 8500 character set for Korean

# ***Using SATO Firmware with Non- English Character Cartridge***

# **3**

The following firmware has to be downloaded to the GT4e series printer in order to print the Non-English characters:

**Firmware version 13.00.00.0Y8 (updated 27-Dec-2006)**

If you have any inquiries submit a request form at (<https://sato-globalhelp.zendesk.com/hc/en-001/requests/new>).

Please refer to the appendix for the detail description of the commands.

***Note: The latest version of firmware (13.00.00.0Y8Z) supports printing of True Type Font print command <ESC>RD, where both 1 byte data and 2 bytes True Type Font in the memory cartridge can be printed. The correct cartridge font (Y8) must be used for this firmware in order to print out the desired characters.***

# Example

# 4

Please find the command specifications from the appendix.

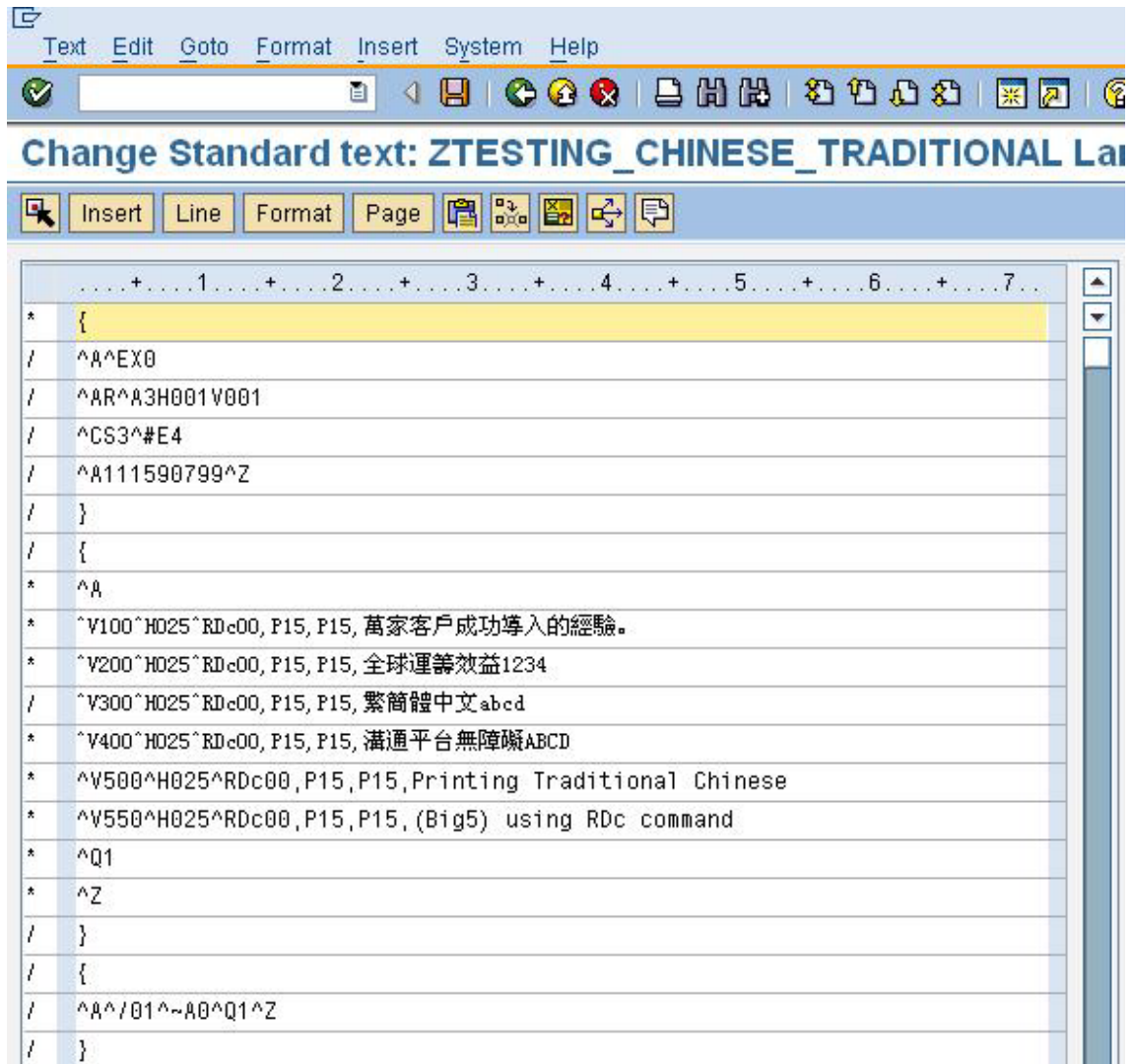


Figure 4 ITF file with Traditional Chinese

**Note:** Parameter "c" has to be used for the Traditional Chinese.



Using the above mentioned device type (with codepage 8300) and the SATO firmware with Big5 character set, the following printout can be produced.



**Figure 5 Printout with Traditional Chinese**

## Change Standard text: ZTESTING\_KOREANE\_UNICODE Language EN

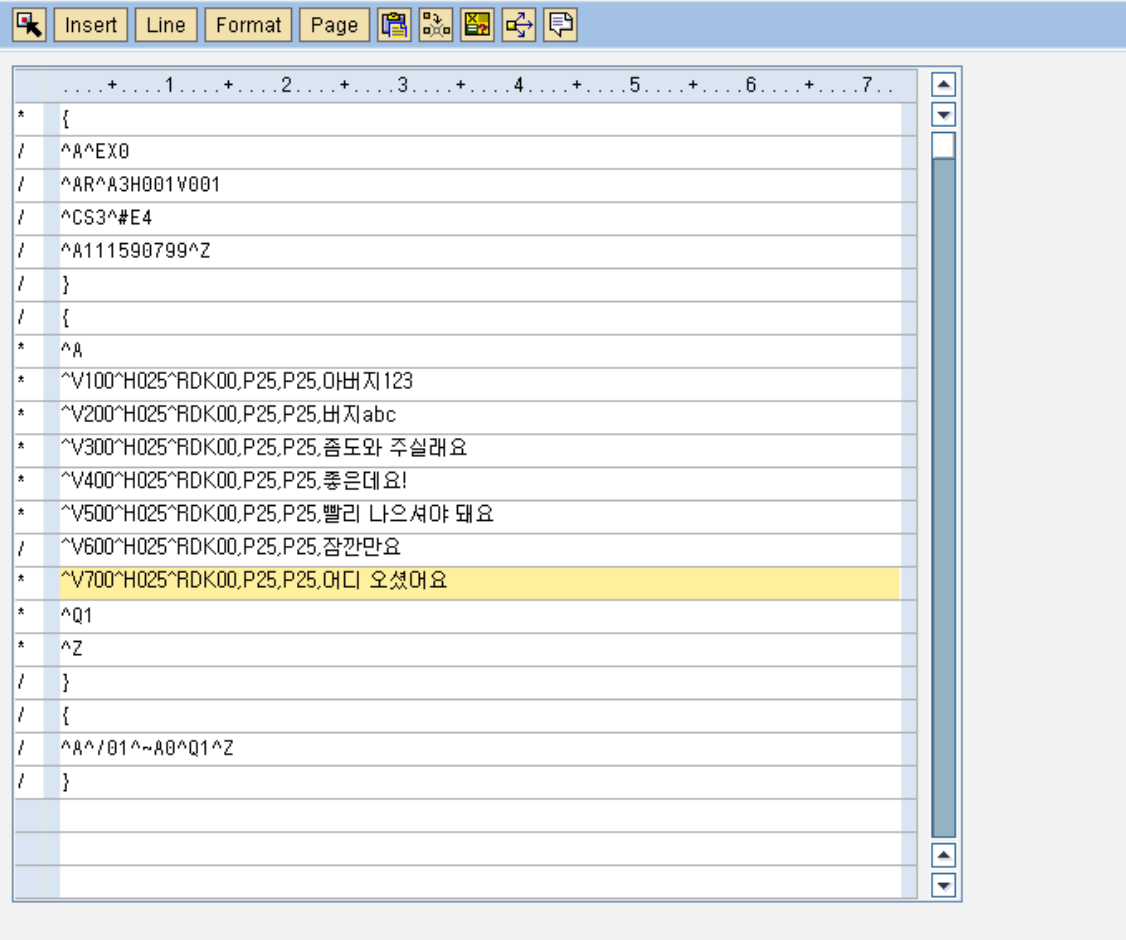


Figure 6 ITF file with Korea characters

**Note:** Parameter “K” has to be used for the Korean characters.

Using the above mentioned device type (with codepage 8500) and the SATO firmware with KSC5601 (HYRGoThic Medium) character set, the following printout can be produced.

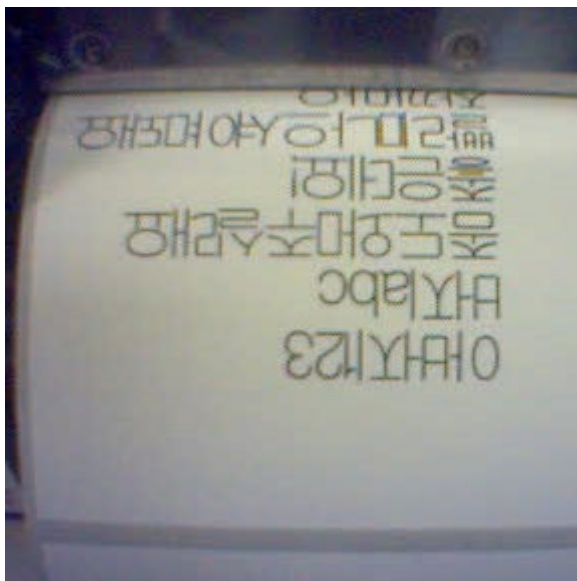


Figure 7 Printout with Korean characters

# Appendix

# 5

## 5.1. Command Specification

### 【Format】

<RD>a b c, d d d, e e e, n ~ n

#### ●Parameter

a	「Font type」	=	C : 「MKaiSO-Medium-U(simplified)」 c : 「MHeiS-Bold-U(traditional)」 K : 「HYGungSo-Bold」 T : 「AngsanaUPC」 F : 「FuturaIIBook」 P : 「CG Palacio」 S : 「CG Century Schoolbook」 G : 「CG Triumvirate Condensed」 V : 「Univers Medium」 t : 「CG Times」
b	「Character set」	=	0 without specifying character set 1 「Latin1」 ISO 8859/1 Latin 1 2 「Latin2」 ISO 8859/2 Latin 2 3 「Latin5」 ISO 8859/9 Latin 5 4 「Grk」 CP-737 DOSGreek 5 「Cyr」 CP-855 DOSCyrillic 6 「Arb」 CP-864 DOSArabic 7 「Codepage874」 CP-874 Thai 8 「CP-850」 CP-850 Multilingual
c	「Character style」	=	0 「standard」 Medium
d	「horizontal size」	=	0 0 4 ~ 9 9 9 (dot) / P 0 2 ~ P 9 9 (point)
e	「vertical size」	=	0 0 4 ~ 9 9 9 (dot) / P 0 2 ~ P 9 9 (point)
n	「print data」	=	data

### **NOTE:**

With effect from version 13.00.00.0Y8Z, user can now print 1-byte data with 2-byte standard cartridge fonts using <RD>c & <RD>K.

<RD>C commands will not available for printing data containing both 1-byte and 2-byte data.

However, it can still be used to print the standard 2-byte font data.

## 5.2. Built-in Font for Separate Cartridge

TrueType font, outline font and setting value that is integrated in every cartridge is shown in table below.

### ① English cartridge

No.	Font style	Font ID No.	Font type	Style code	Character set	Data file name
1	FuturaIfBook	01	F	10	CP-850	EVL91810.TTF
2	CG Triumvirate Condensed	02	G	10	CP-850	EVL92246.TTF
3	CG Palacio	03	P	10	CP-850	EVL92532.TTF
4	CG Century Schoolbook	04	S	10	CP-850	EVL92546.TTF
5	Univers Medium	05	V	10	CP-850	EVL94021.TTF
6	CG Times	06	t	20	Latin1/2/5,Grk,Cyr,Arb	EVL_UCGT.TTF
7	Univers Medium	07	V	20	Latin1/2/5,Grk,Cyr	EVL_UUNL.TTF

### ② European cartridge

No.	Font style	Font ID No.	Font type	Style code	Character set	Data file name
1	Univers Medium	01	V	10	CP-850	EVL94021.TTF
2	CG Times	02	t	20	Latin1/2/5,Grk,Cyr,Arb	EVL_UCGT.TTF
3	Univers Medium	03	V	20	Latin1/2/5,Grk,Cyr	EVL_UUNL.TTF

### ③ Arabic cartridge

No.	Font style	Font ID No.	Font type	Style code	Character set	Data file name
1	CG Times	01	t	20	Latin1/2/5,Grk,Cyr,Arb	EVL_UCGT.TTF

### ④ Thai cartridge

No.	Font style	Font ID No.	Font type	Style code	Character set	Data file name
1	AngsanaUPC	01	T	20	Code page874	EVLANGSA.TTF

### ⑤ Chinese cartridge

No.	Font style	Font ID No.	Font type	Style code	Character set	Data file name
1	MKaiSO-Medium-U(simplified)	01	C	00	GB2312(GL)	MKAISOMU.TTF
2	MHeiS-Bold-U(traditional)	02	c	00	Big5	MHSBU1.TTF

### ⑥ Korean cartridge

No.	Font style	Font ID No.	Font type	Style code	Character set	Data file name
1	HYGungSo-Bold	01	K	00	KSC5601	H2GSRB.TTF

### ⑦ Japanese cartridge

No.	Font style	Font ID No.	Font type	Style code	Character set	Data file name
1	Outline Kanji	01	K	00	JIS/SJIS	OLKanji.olf

**SAATCHI**