



Printing Labels from Microsoft BizTalk RFID Provider

User Manual

Copyrights

Any unauthorized reproduction of the contents of this document, in part or whole, is strictly prohibited.
© 2020 SATO Corporation. All rights reserved.

Limitation of Liability

SATO Corporation and its subsidiaries in Japan, the U.S and other countries make no representations or warranties of any kind regarding this material, including, but not limited to, implied warranties of merchantability and fitness for a particular purpose. SATO Corporation shall not be held responsible for errors contained herein or any omissions from this material or for any damages, whether direct, indirect, incidental or consequential, in connection with the furnishing, distribution, performance or use of this material.

Specifications and contents of this document are subject to change without notice.

Trademarks

SATO is a registered trademark of SATO Holdings Corporation and its subsidiaries in Japan, the U.S. and other countries.

Microsoft® and BizTalk® are either registered trademarks or trademarks of Microsoft Corporation in the United States and/or other countries.

NiceLabel® is a registered trademark of Euro Plus d.o.o in the U.S.A. and other countries.

All other trademarks are the property of their respective owners.

Software Updating Disclaimer

While all efforts have been taken to ensure accuracy and currency of the information contained herein, there are instances where the contents of this document may be outdated. In that case, proceed to your local SATO regional website (<https://www.sato-global.com/drivers/redirect.html>) to check whether an updated document has been made available for your reference.

Contact Information

Access the following site and select the region/country nearest to you.
<https://www.sato-global.com/about/locations.html>

Table of Contents

Table of Contents	3
1. Overview	4
2. Design and Export Template with NiceLabel Pro.....	5
2.1. Create label template using the NiceLabel Pro software.	5
2.2. Exporting Design as Template	9
3. Upload Template to Printer via BizTalk RFID Manager	11
3.1. Add Template	11
4. Printing RFID Tag from BizTalk RFID Manager	13
4.1. Print Tag	13

Overview

1

SATO distributes the BizTalk RFID Device Provider for Microsoft BizTalk Server. Users can print out RFID tags from a SATO XML RFID enabled printer using the BizTalk RFID Device Provider. This document is to explain the following steps to test print a RFID Tag from BizTalk RFID Manager.

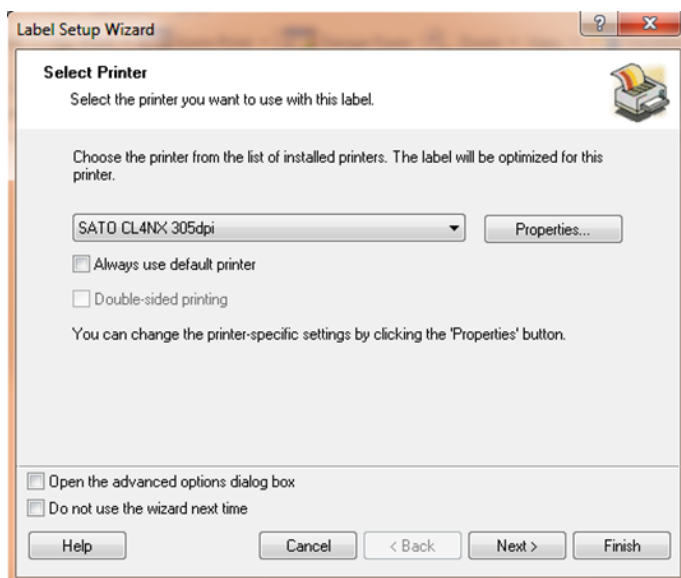
- Design NiceLabel template and export
- Upload the template to SATO Printer using BizTalk RFID Manager
- Use Microsoft BizTalk RFID Manager to perform test print.

Design and Export Template with NiceLabel Pro

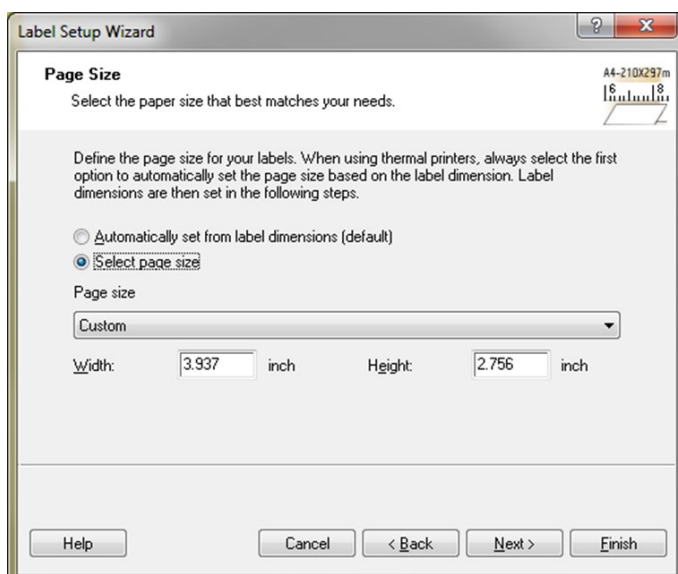
2

2.1. Create label template using the NiceLabel Pro software.

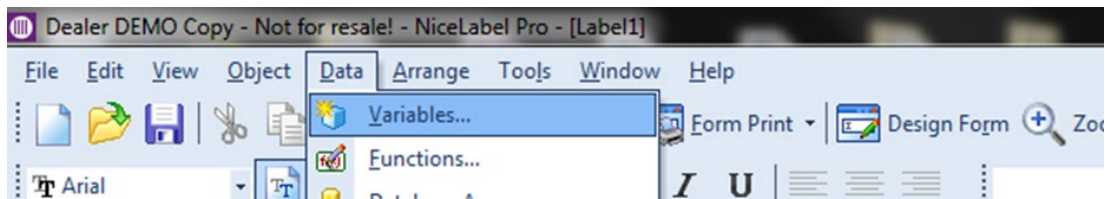
1. Create a new label using the NiceLabel Pro software.
2. Select RFID Enabled Printer Driver from Label Setup Wizard.



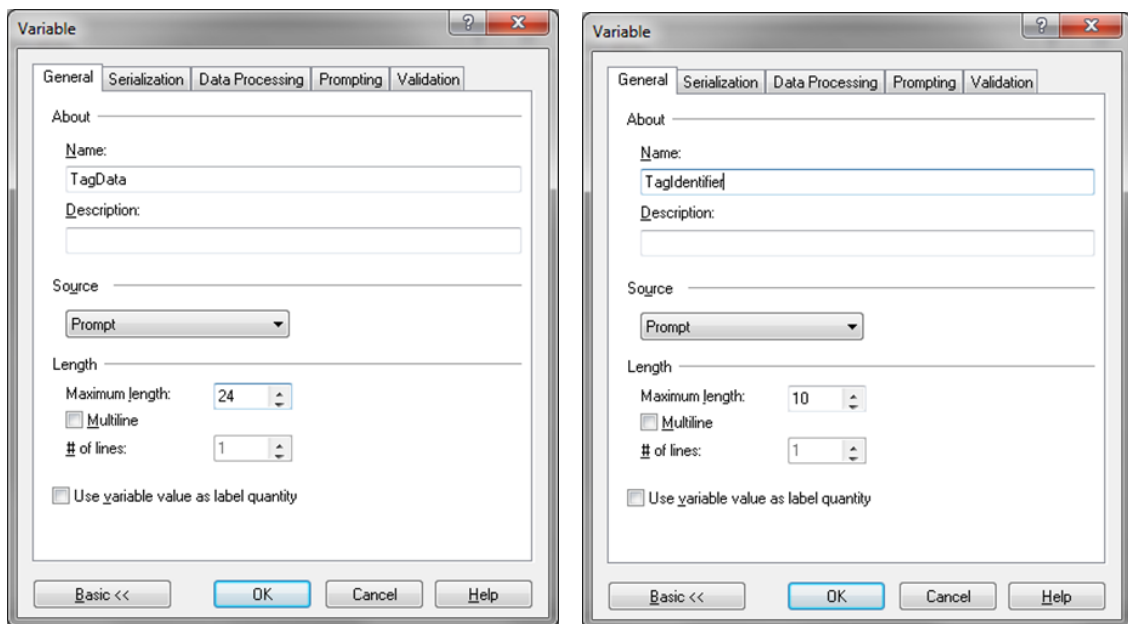
3. Click Next and setup the label size.



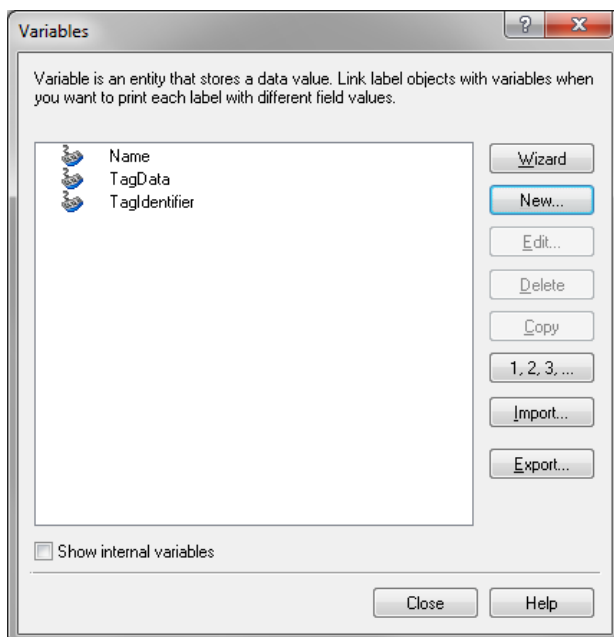
4. From the main Menu, select Data -> Variables to add variables.



5. Click the “New” button to add variable. Make sure to add TagData (length 24), TagIdentifier variable with exact name described here. It is important to follow exact name in order to print correctly by BizTalk RFID System.



6. Create the variables as shown below.

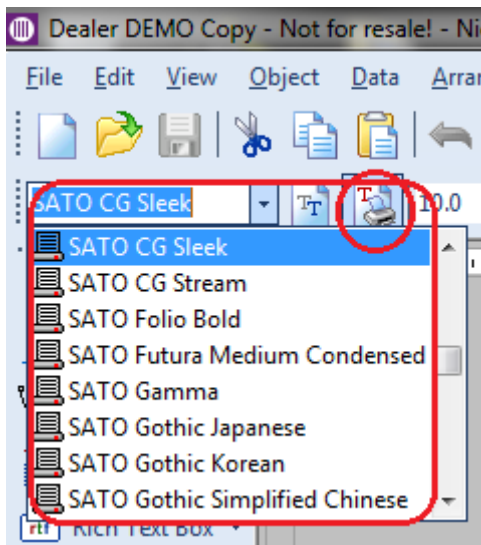


7. Add Fields to the design.

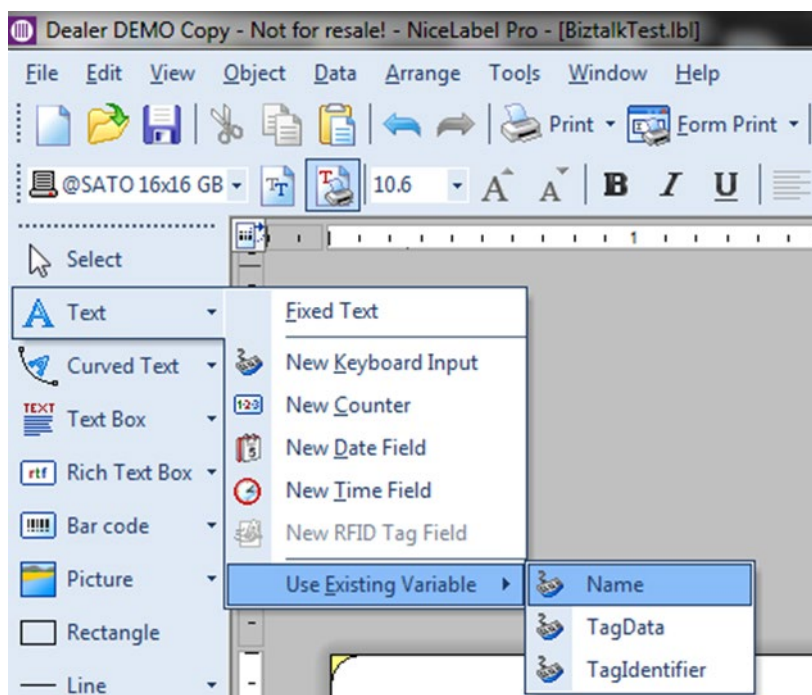
It is preferable to use SATO printer resident font for all items for the optimize performance.

However, static fields may use any font such as TTF Fonts.

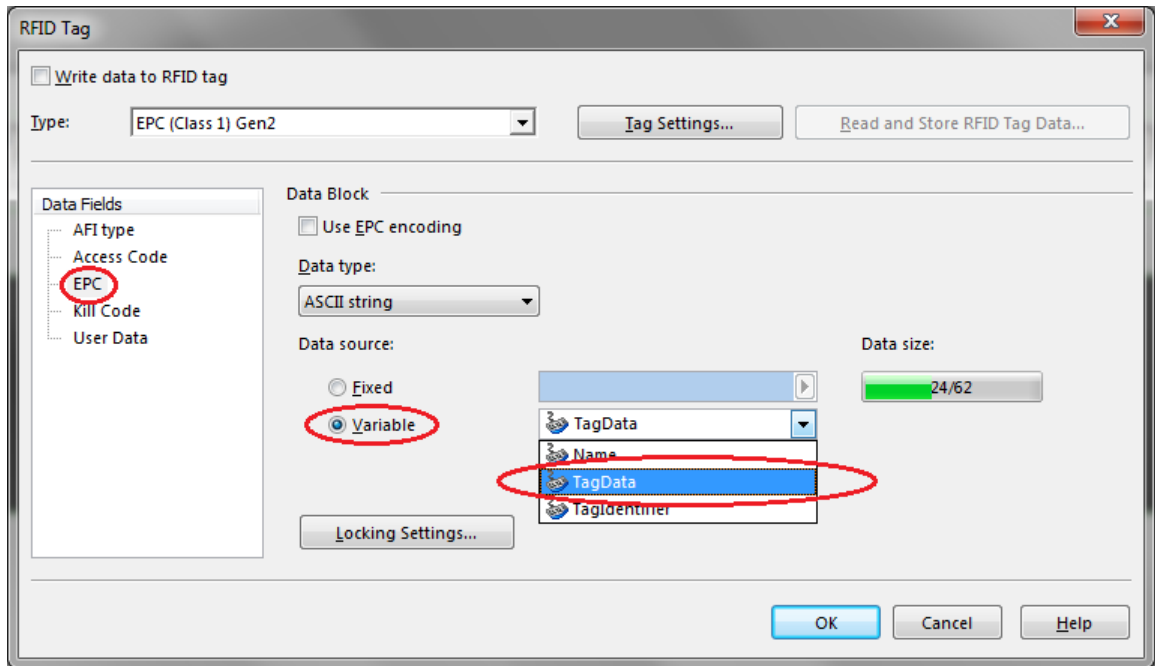
For variables fields, only printer resident font MUST be used.



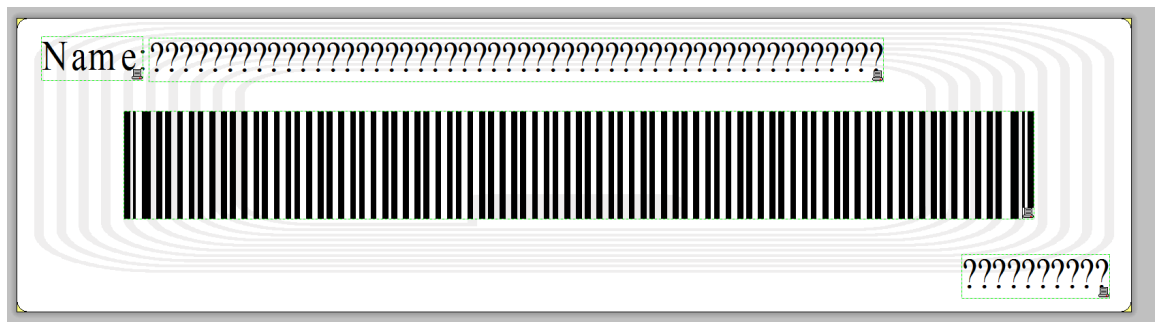
8. To add Variable Text or Barcode, click the down arrow icon at the right edge of the selected Tool, select "Use Existing Variable" and select the desired variable to add.



9. For RFID Tag, select RFID Tag Data from sub menu. Select EPC from Data Fields List and choose Variable Radio Button. Choose TagData from the dropdown list beside and click OK to confirm.



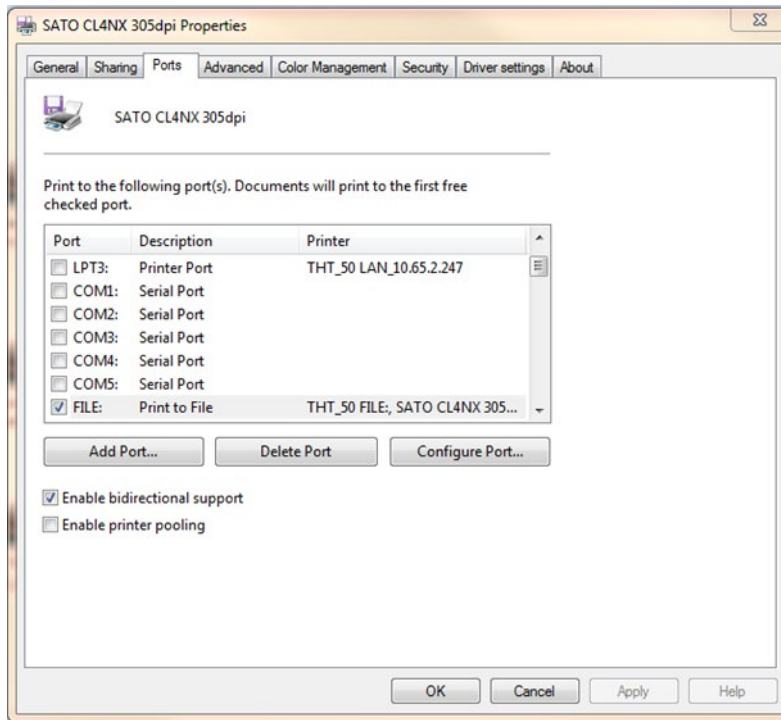
10. Lastly, add Text Field with variable TagIdentifier into design and place anywhere within the label. This is required by BizTalk RFID System and will NOT be printed into actual label. The final label should look similar to below screenshot.



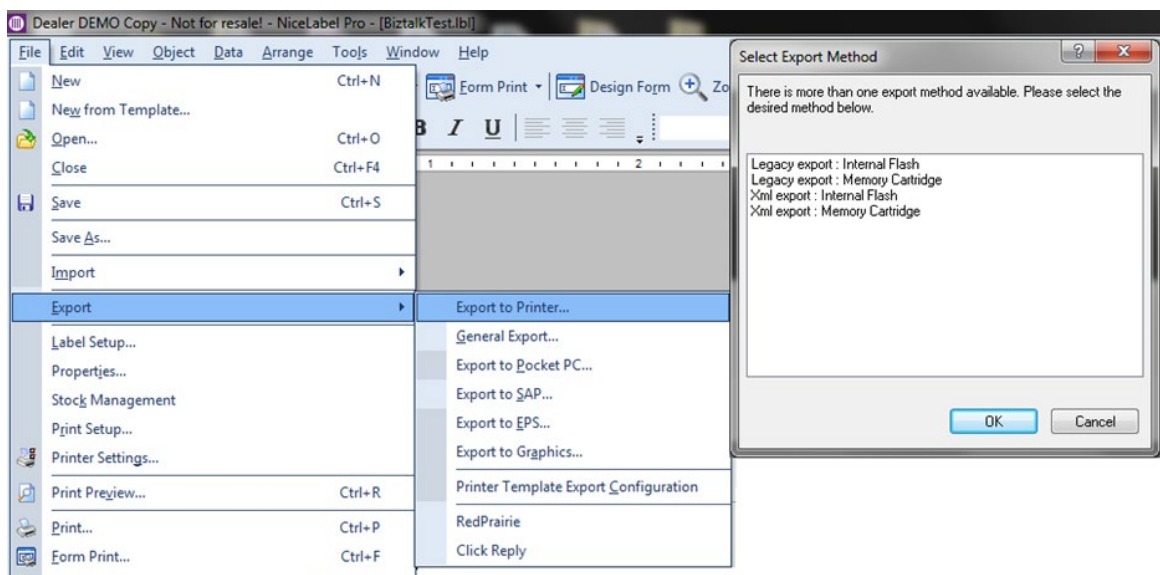
11. Save the label design before proceeding.

2.2. Exporting Design as Template

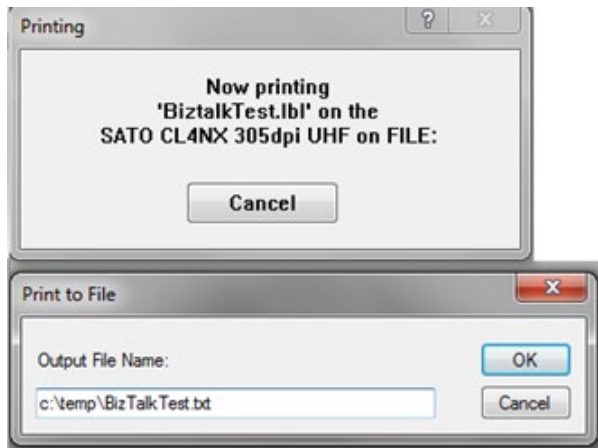
1. Once the label is designed and saved, export the template into text file and upload to printer through BizTalk RFID Manager. By exporting the template file can be reused easily for multiple printers. In order to export to text file, set the Printer Port to "FILE:" at the printer properties dialog under Control Panel -> Printers & Faxes.



2. Click File-> Export->Export to Printer.
In "Select Export Method" dialog, select "XML export: Internal Flash" option and click OK.



3. It will prompt a dialog for output file name; enter the desired template file name with full path from the entry box.



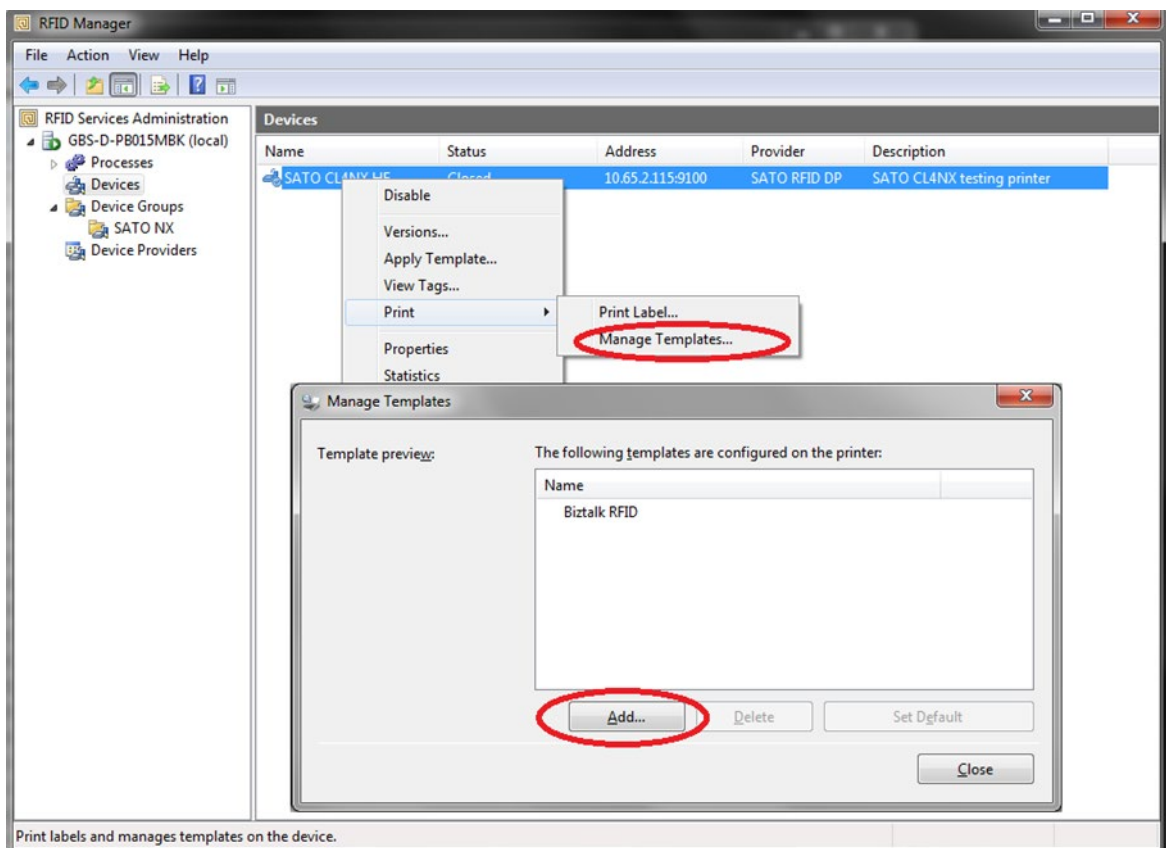
Upload Template to Printer via BizTalk RFID Manager

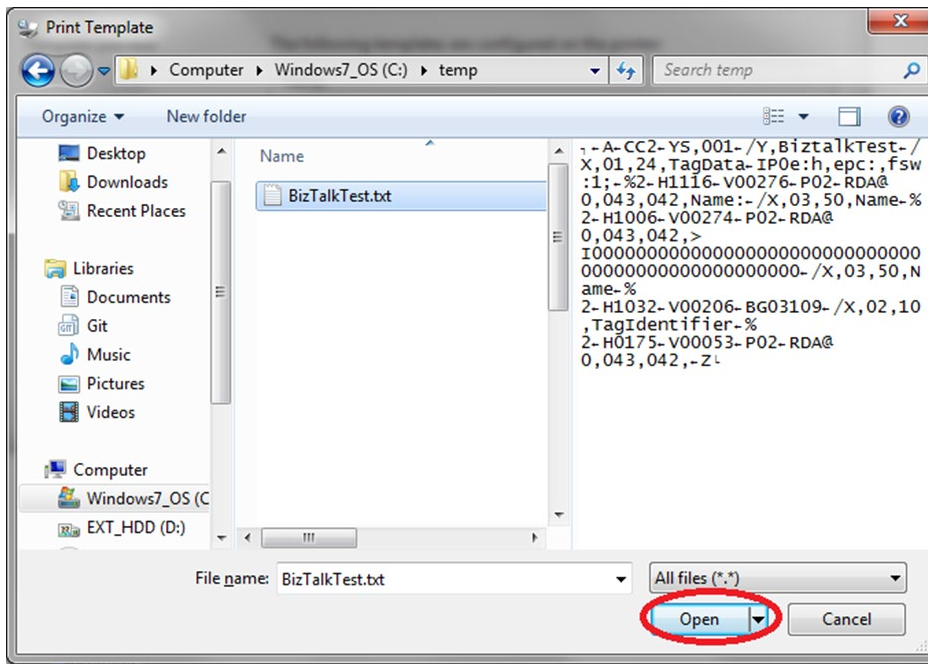
3

3.1. Add Template

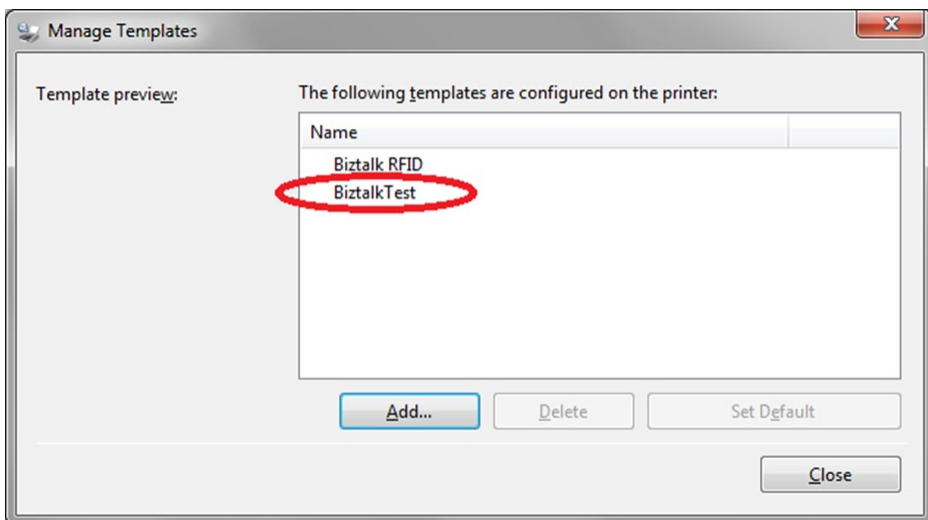
1. Open RFID Manager and go to Devices.
2. Select the printer and right click Print ->Manage Templates Menu to view template stored in printer.

Click “Add” button and select template file to upload the new template. If uploading template with same format name, the existing template should be deleted first using “Delete” button.





3. The list will be refreshed with the newly uploaded template.

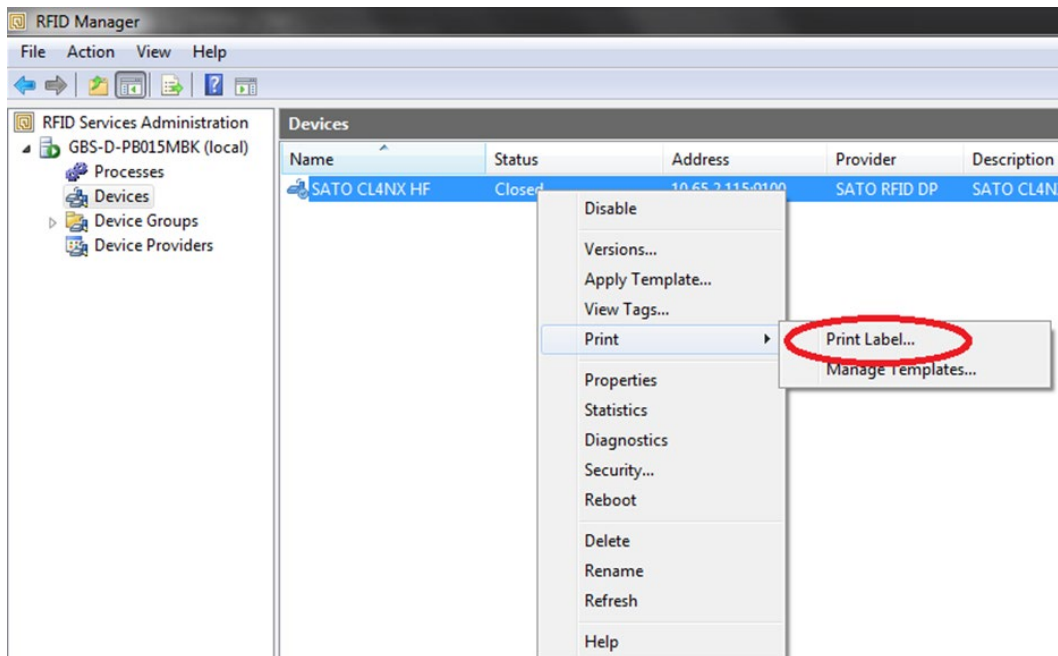


Printing RFID Tag from BizTalk RFID Manager

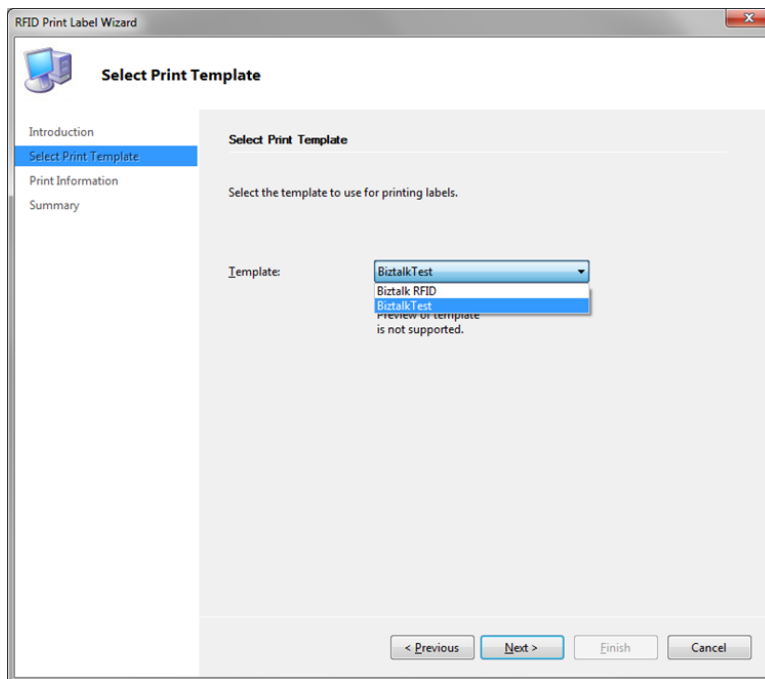
4

4.1. Print Tag

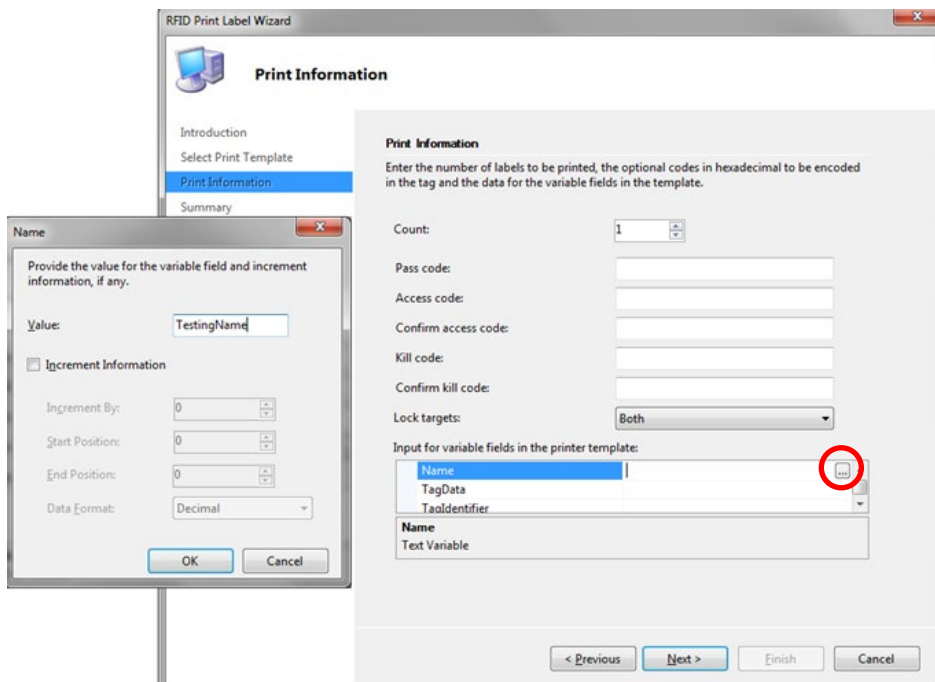
1. Select Print Label menu from printer context menu.



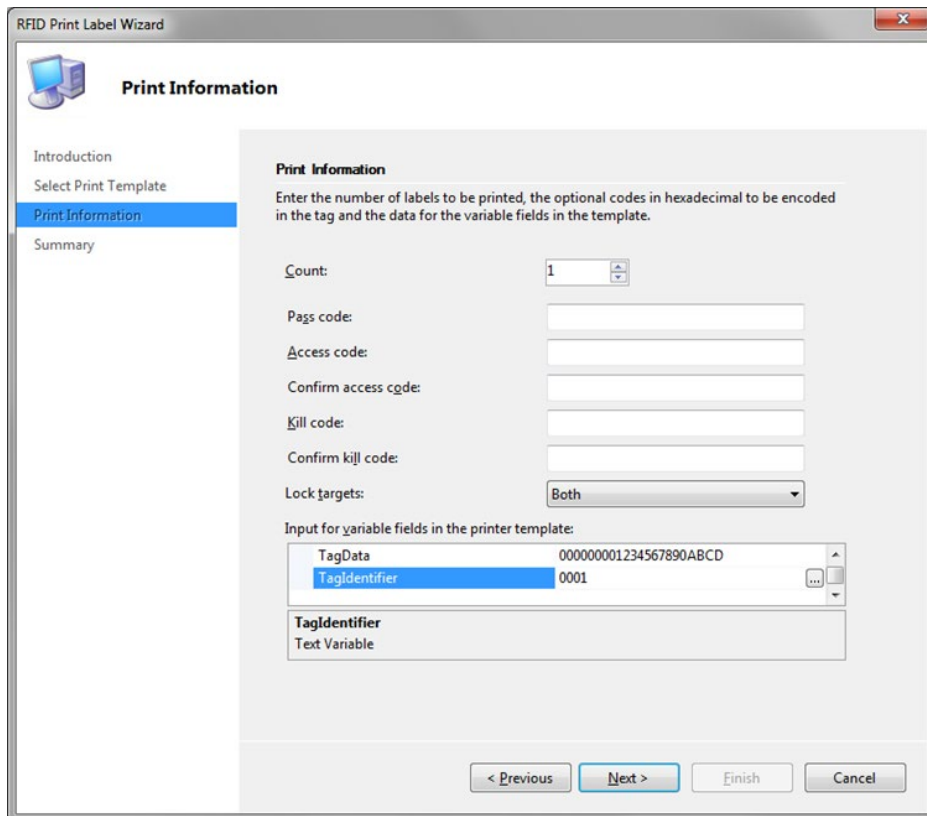
2. Click "Next" until the "Template Selection Screen". Select desired template to print and click "Next".



3. Fill in the variables to print. Click "..." button for variable data entry box.



4. Make sure to input 24 Hex char for “TagData” and minimum 4 Hex char for “TagIdentifier”.
“TagIdentifier” cannot be odd number of character (e.g. count must be 4,6 8 etc.).



The screenshot shows the 'Print Information' step of the 'RFID Print Label Wizard'. The left sidebar contains a tree view with 'Introduction', 'Select Print Template', 'Print Information' (selected), and 'Summary'. The main area is titled 'Print Information' and contains the following fields:

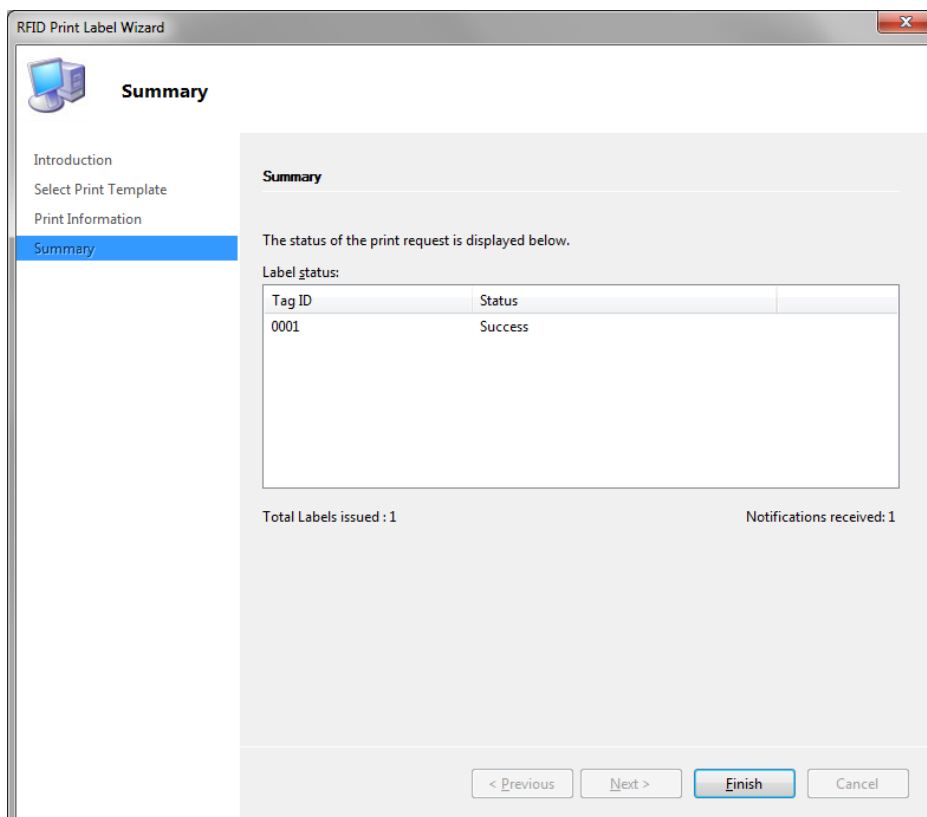
- Count:** A numeric input field with the value '1'.
- Pass code:** A text input field.
- Access code:** A text input field.
- Confirm access code:** A text input field.
- Kill code:** A text input field.
- Confirm kill code:** A text input field.
- Lock targets:** A dropdown menu with 'Both' selected.

Below these fields is a section titled 'Input for variable fields in the printer template:' containing a table:

Variable	Value
TagData	000000001234567890ABCD
TagIdentifier	0001

Below the table is a label 'TagIdentifier' with the text 'Text Variable' underneath it. At the bottom of the window are four buttons: '< Previous', 'Next >', 'Finish', and 'Cancel'.

5. Click “Next” and the system will send the print data to printer and will display the status. Printer will print out 1 RFID Tag and the dialogs will display “Success” with the “Tag ID” (TagIdentifier number)



The screenshot shows the 'Summary' step of the 'RFID Print Label Wizard'. The left sidebar contains a tree view with 'Introduction', 'Select Print Template', 'Print Information', and 'Summary' (selected). The main area is titled 'Summary' and contains the following information:

- Summary:** A section header.
- The status of the print request is displayed below.**
- Label status:** A table showing the status of the print request.

Tag ID	Status
0001	Success

Below the table, it says 'Total Labels issued : 1' and 'Notifications received: 1'. At the bottom of the window are four buttons: '< Previous', 'Next >', 'Finish', and 'Cancel'.

SATO